

# SCPP and Porcupine Ridge Lease

Our View From

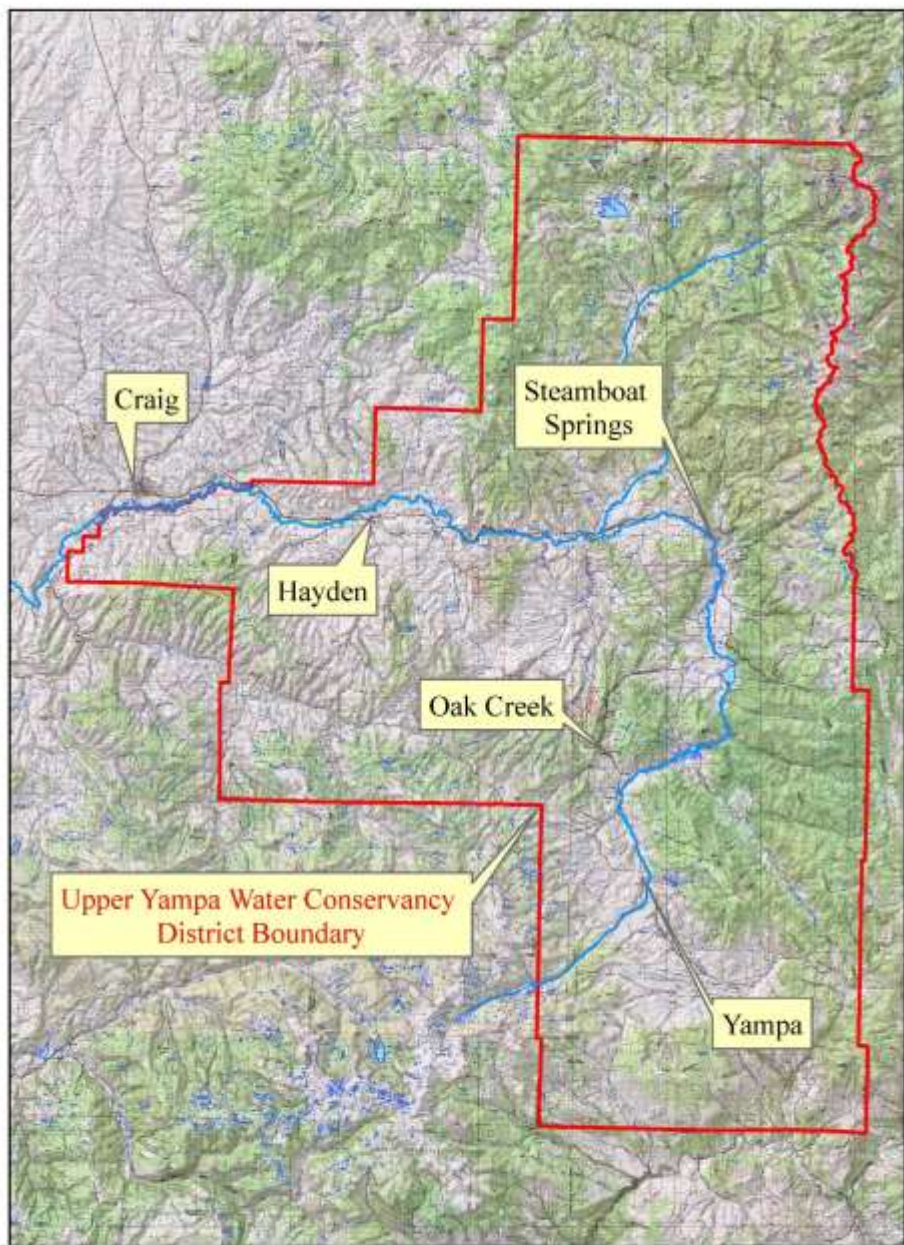
The Upper Yampa Water Conservancy District

Or

Can't get there from here....?

Kevin McBride

General Manager Upper Yampa WCD



## Average Annual Precipitation

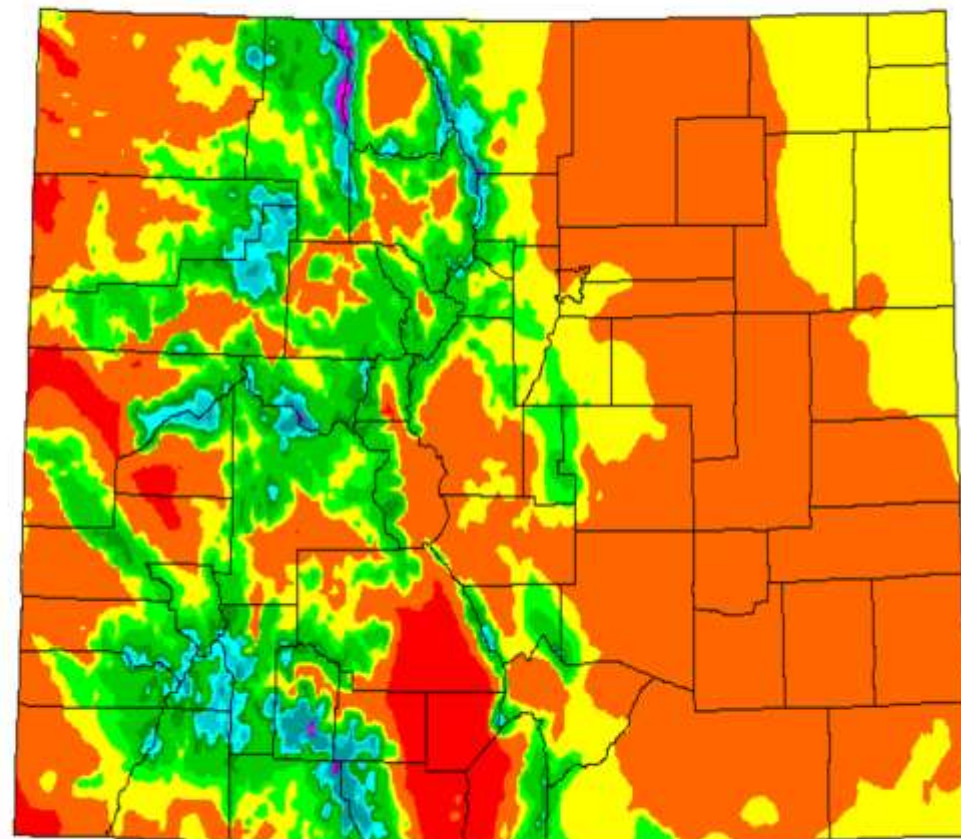
### Colorado



Period: 1961-1990

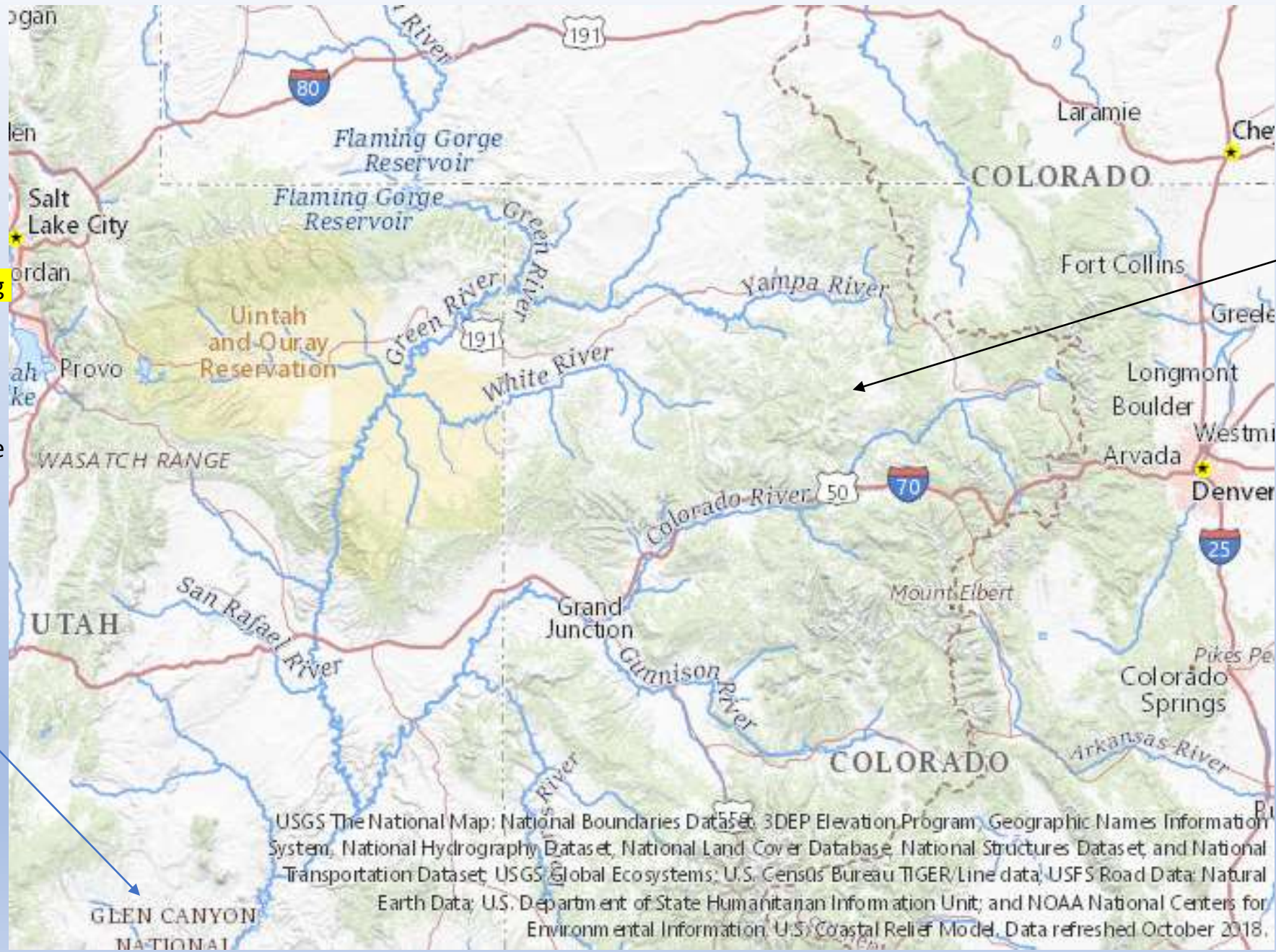
This map is a plot of 1961-1990 annual average precipitation contours from NOAA Cooperative stations and (where appropriate) USDA-NRCS SNOTEL stations. Christopher Daly used the PRISM model to generate the gridded estimates from which this map was derived; the modeled grid was approximately 4x4 km latitude/longitude, and was resampled to 2x2 km using a Gaussian filter. Mapping was performed by Jenny Weisburg. Funding was provided by USDA-NRCS National Water and Climate Center.

12/8/97



Where the Water comes from, high elevations.

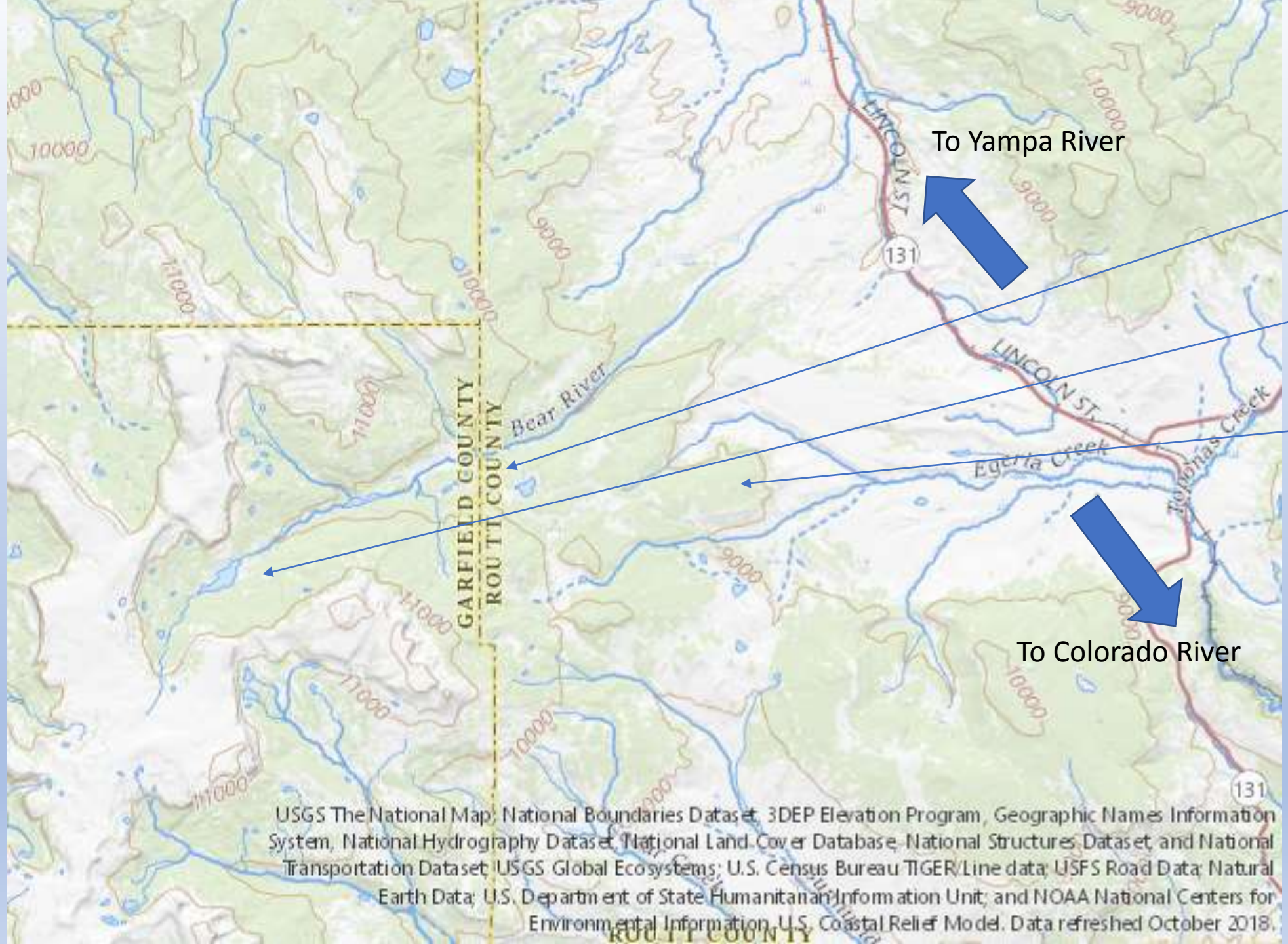
The **purpose** ...is to help determine whether ...system conservation is ...feasible to mitigate the impacts and ongoing drought on the Colorado River System by **managing water elevation levels in Lakes Mead and Powell** ... with the ancillary benefit of **enhancing flows** in areas upstream of storage reservoirs.



Porcupine Ridge

Lake Powell

USGS The National Map: National Boundaries Dataset, 3DEP Elevation Program, Geographic Names Information System, National Hydrography Dataset, National Land Cover Database, National Structures Dataset, and National Transportation Dataset; USGS Global Ecosystems; U.S. Census Bureau TIGER/Line data; USFS Road Data; Natural Earth Data; U.S. Department of State Humanitarian Information Unit; and NOAA National Centers for Environmental Information. U.S. Coastal Relief Model. Data refreshed October 2018.



To Yampa River

Yamcolo Reservoir

Stillwater Reservoir

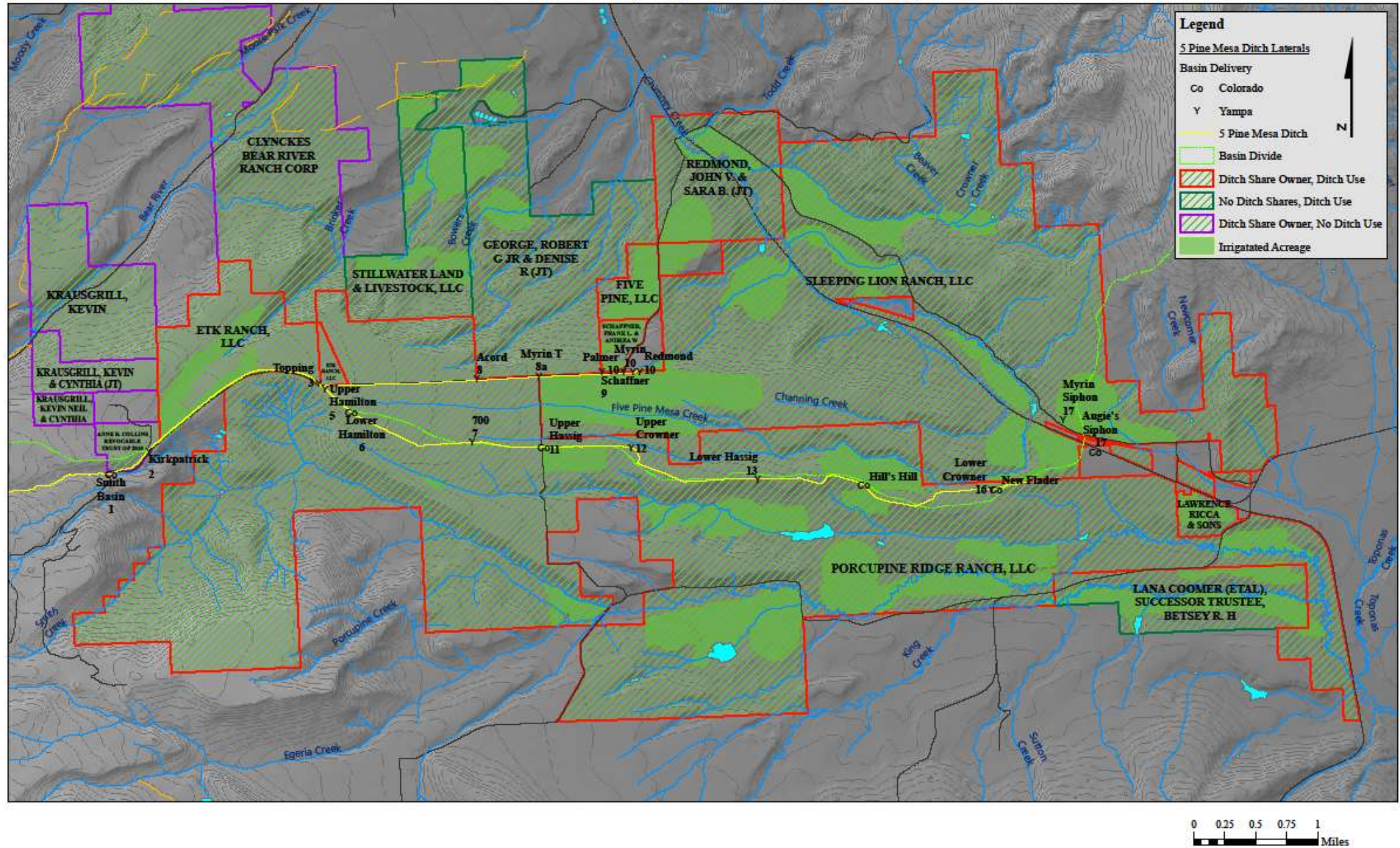
Porcupine Ridge

To Colorado River

USGS The National Map; National Boundaries Dataset; 3DEP Elevation Program; Geographic Names Information System; National Hydrography Dataset; National Land-Cover Database; National Structures Dataset; and National Transportation Dataset; USGS Global Ecosystems; U.S. Census Bureau TIGER/Line data; USFS Road Data; Natural Earth Data; U.S. Department of State Humanitarian Information Unit; and NOAA National Centers for Environmental Information; U.S. Coastal Relief Model. Data refreshed October 2018.

# Five Pine Mesa Ditch Ditch User Property and Irrigated Acreage

?? How will this contract be administered??!!



**CONTRACT FOR PARTICIPATION IN  
THE UPPER COLORADO RIVER BASIN  
SYSTEM CONSERVATION PILOT PROGRAM**

This Contract for Participation in the Upper Colorado River Basin System

Conservation Pilot Program (“Contract”) is entered into **this 7 day of May, 2018**

10.1 Compensation: The Contractor will be paid a maximum **of FOUR HUNDRED TWENTY-ONE THOUSAND, SIX HUNDRED FIFTY DOLLARS (\$421,650.00)** for implementation of the Project Activity

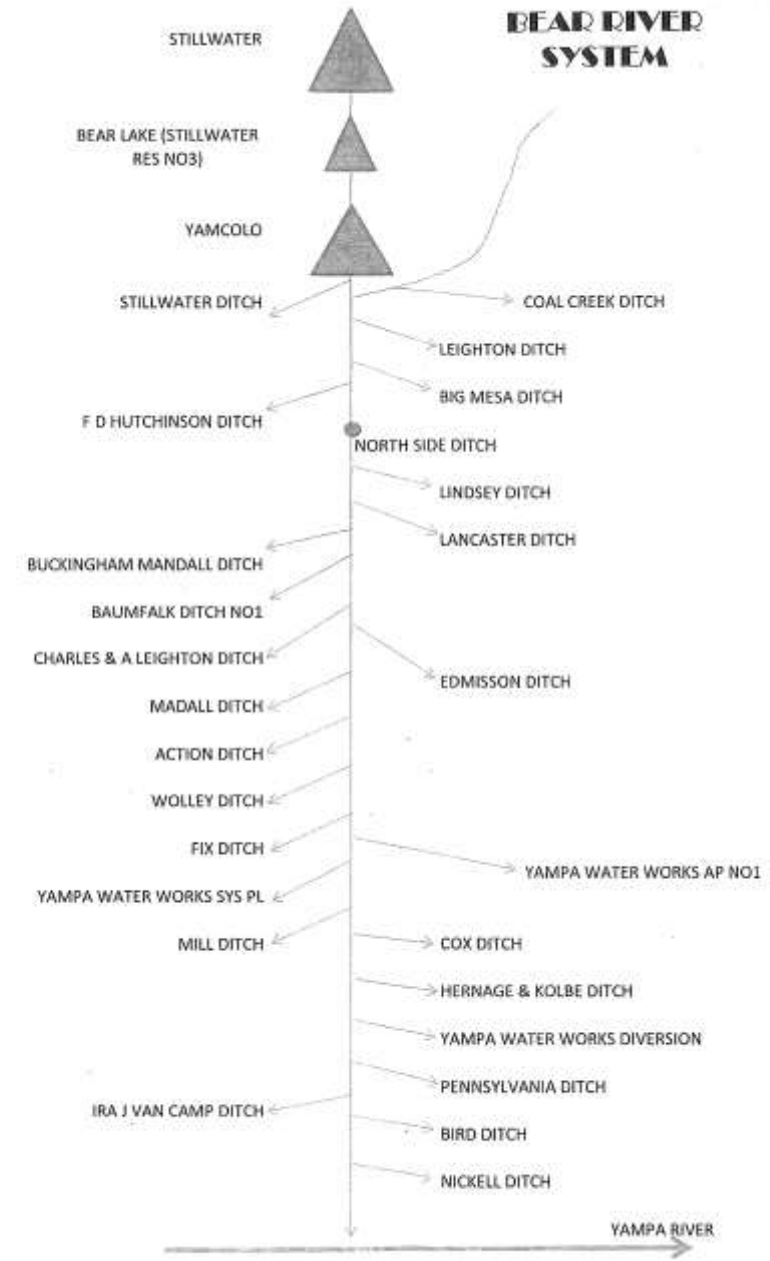
The Contractor represents, warrants, and acknowledges the Commission’s reliance on the following representations and warranties:

8.1 Rights to Use Water and Property:

i. The **Contractor has the legal right and authority to use the subject water and property described in Section 9 below** under Colorado law to perform the Contractor’s obligation under this Contract. To the best of the Contractor’s knowledge, **no legal impediment exists** regarding the Contractor’s ability to perform the Contractor’s obligations under this Contract; and

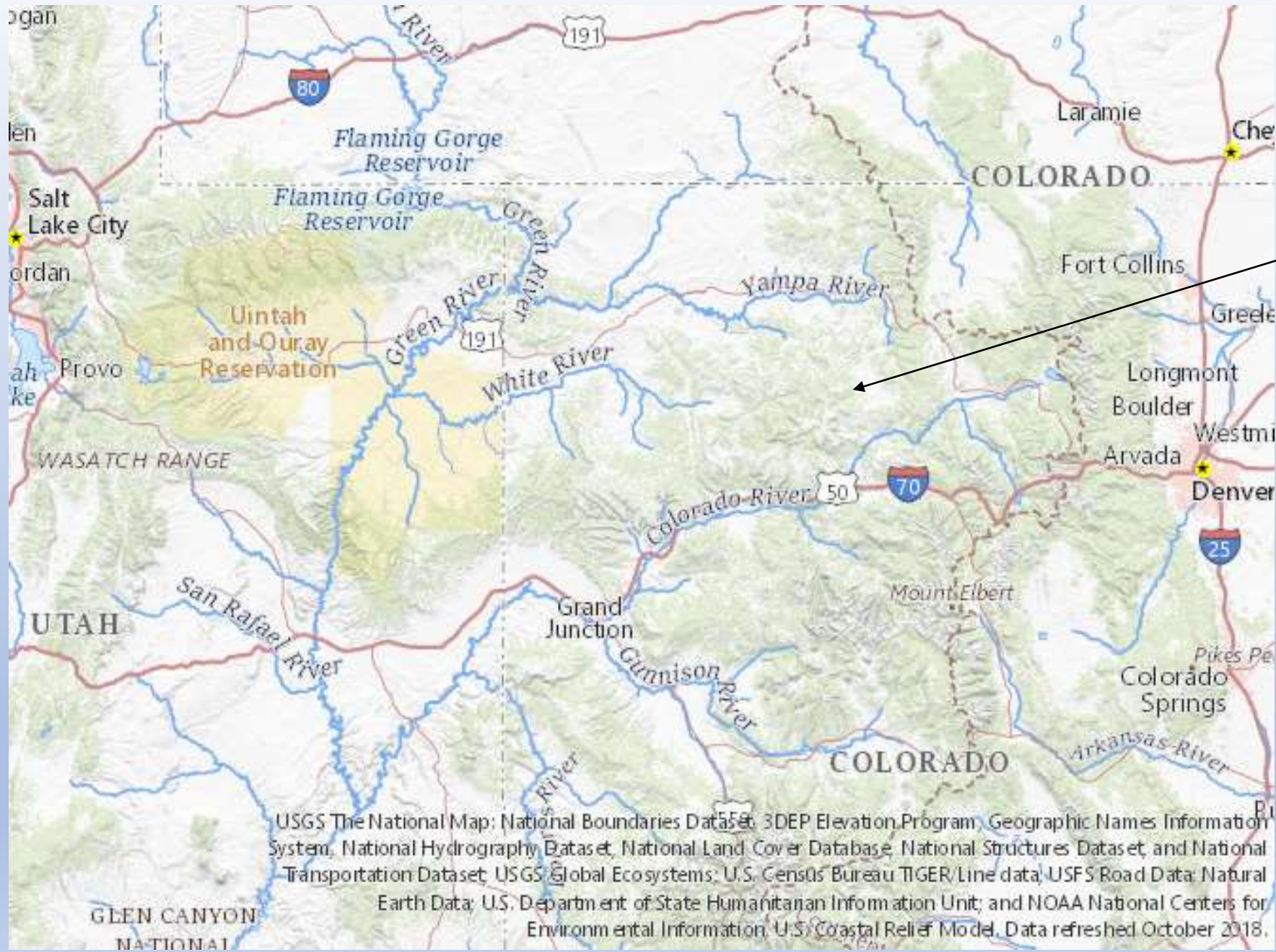
Porcupine Ridge will not request water from Stillwater Ditch **and will inform the reservoir company and the Upper Yampa Conservancy District** that they will not irrigate in 2018. **Deliveries to other water users will be unaffected by this project.**

## BEAR RIVER SYSTEM

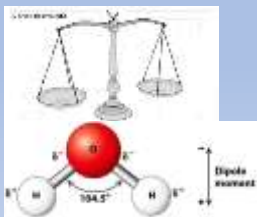


# In Summary

- SCPP
- DCP
- Structural Deficit
  
- CWP with BRT
- BIP with the IPP's
- IWMP
- SMP
  
- UYWCD
- COE
- FERC
- NEPA
- 404 -EPA
- 401 -CDPHE
- 1041



Porcupine Ridge



USGS The National Map: National Boundaries Dataset, 3DEP Elevation Program, Geographic Names Information System, National Hydrography Dataset, National Land Cover Database, National Structures Dataset, and National Transportation Dataset; USGS Global Ecosystems; U.S. Census Bureau TIGER/Line data; USFS Road Data; Natural Earth Data; U.S. Department of State Humanitarian Information Unit; and NOAA National Centers for Environmental Information. U.S. Coastal Relief Model. Data refreshed October 2018.



