



Managing Winter Flows on the Fryingpan: Enhancing Minimum Flows to Benefit Aquatic Life

Heather Lewin, Science and Policy Director
Roaring Fork Conservancy



The Roaring Fork and Fryingpan Watersheds

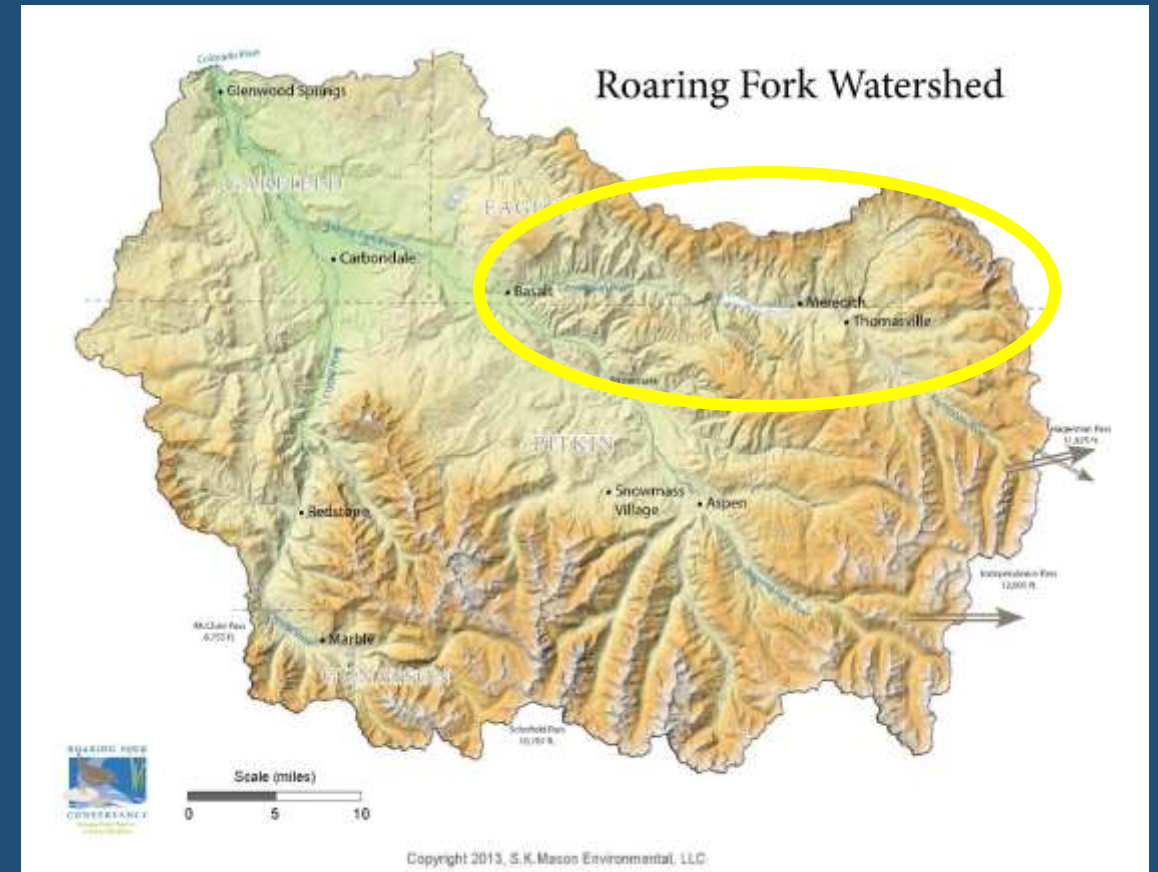
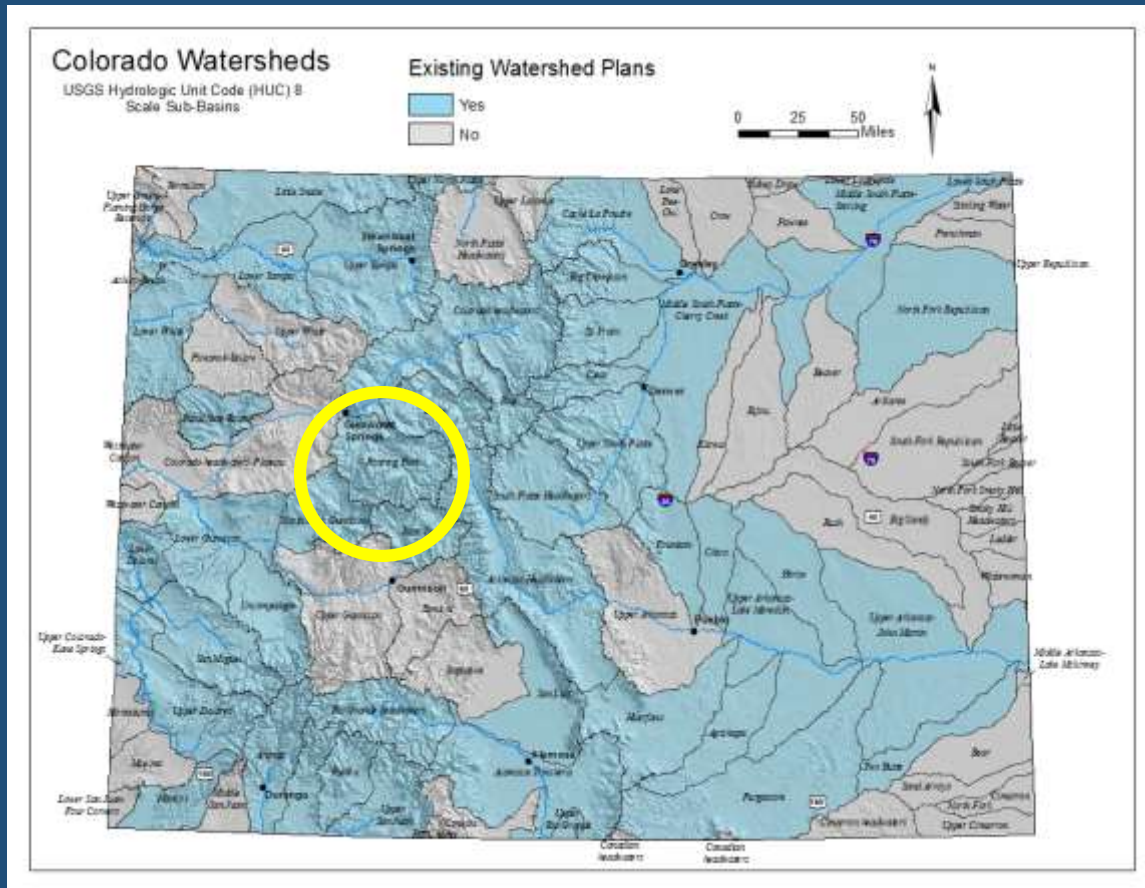


Image: CWCB



Ruedi Reservoir: Background

- Part of the Fry-Ark Project
- 102,369 acre foot capacity
- Fryingpan River



Image: CWCB

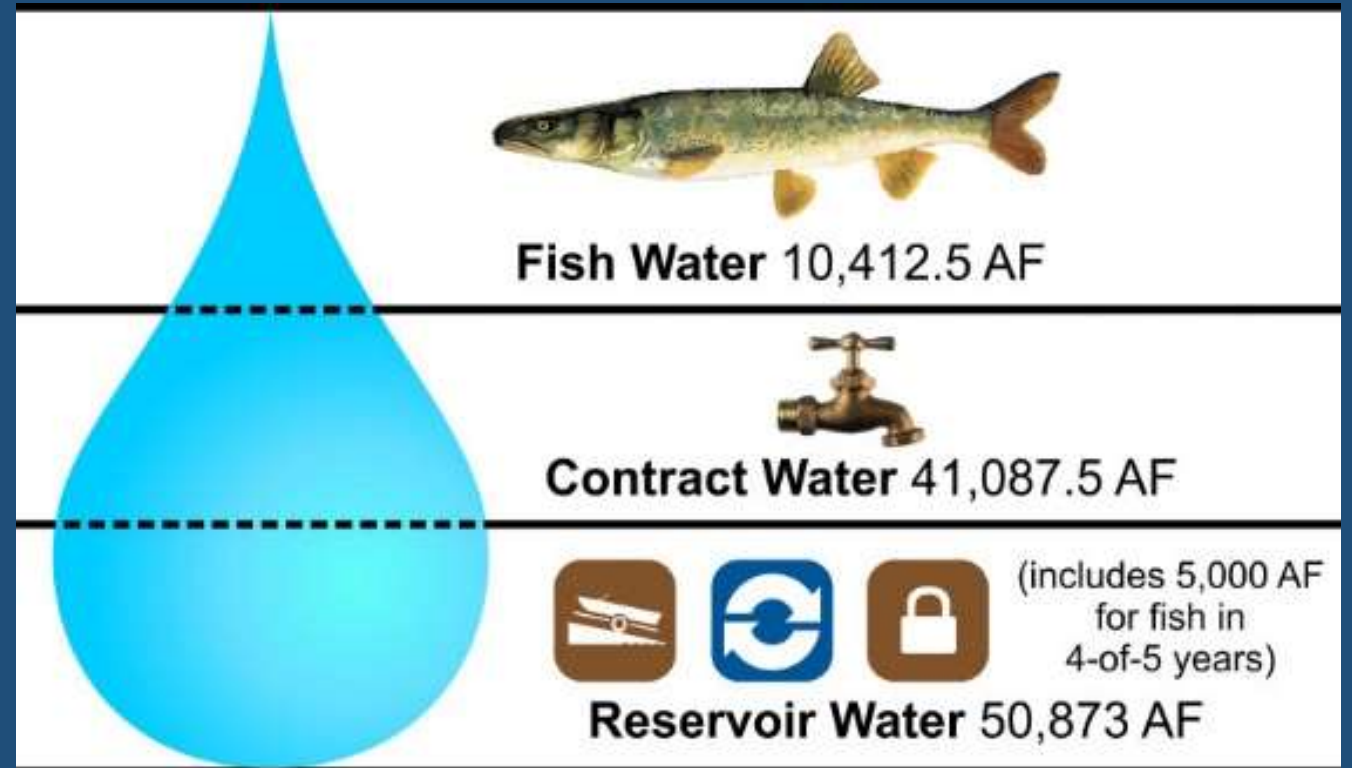


Image: Aspen Journalism

Fryingpan River

- Gold Medal Fishery
- Significant Economic Impact
 - \$3.8 million locally
- Community Values



Fryingpan Flows: Winter

- Reservoir Management Target: 39cfs or inflow, whichever is less
- CWCB Winter Instream Flow: 39cfs
- Ecological Management Target: 70cfs
- Economic Impact: \$1.5 million



Image: Denver Post

Fryingpan Flows: Management Options

- Stay the Course
- Ask & Hope
- Get Creative...
- Get Help!
- Work together



Image: John Newbury

Winter Management

- River District lease is “use it or lose it”
- Late Season Water Management
- Reservoir Levels



Image: John Waterman

Creative Management at Ruedi

- Releases from Ruedi have the potential to benefit 3 rivers simultaneously
- Local Environmental Benefits from flows designated for downstream uses
- Contract Water Donated to Grand Valley



Image: John Waterman



"Would you tell me, please, which way I ought to go from **here?**"

"That depends a good deal on where you want to get to," said the **Cat**.

"I don't much care where," said **Alice**.

"Then it doesn't matter which way you go," said the **Cat**.



Thanks for thinking about it.

Heather Lewin, heather@roaringfork.org

