

Balancing Full Development vs. System Conservation: Wyoming

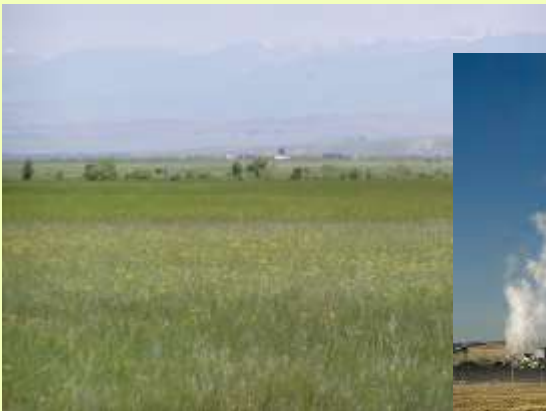


Steve Wolff
Wyoming State Engineer's Office



What is “full development”?

- Available supply is equal to current demand
- Wyoming receives 14% of a highly variable annual supply
- Wyoming’s current demand (and forecasted) is below our apportionment



What is “full development”?

- Risk
- Every year – some areas are short of water (hydrologic shortage) and some have a full supply
- The prior appropriation system administers water based on availability



System Conservation

- A healthy system (supply vs. demand) is important to everyone in the basin
- There is “flexibility” and opportunities in Wyoming to provide system water



System Conservation - Challenges

- Conveyance/shepherding
- Storage & accounting
- Conservation efficiencies
- Environmental
- Who pays?



Work in Progress

- UB demand management efforts
 - Better accounting of consumptive uses
 - System Conservation Pilot Program
- Wyoming Water Banking & Conservation Study
 - Use of temporary water use agreements
 - Federal reservoir storage accounts
 - State-owned storage water

