



Addressing environmental and consumptive needs in Wyoming

Cory Toye
Wyoming Water and Habitat Program Director

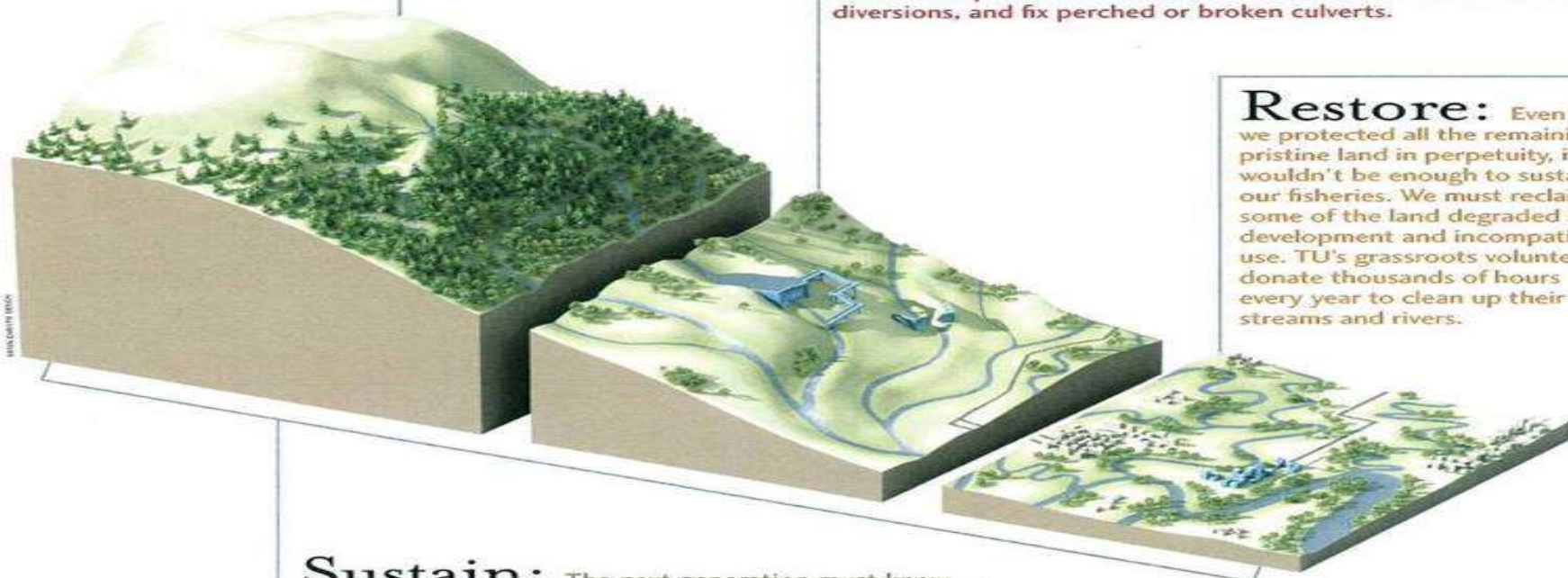
11.2.2016

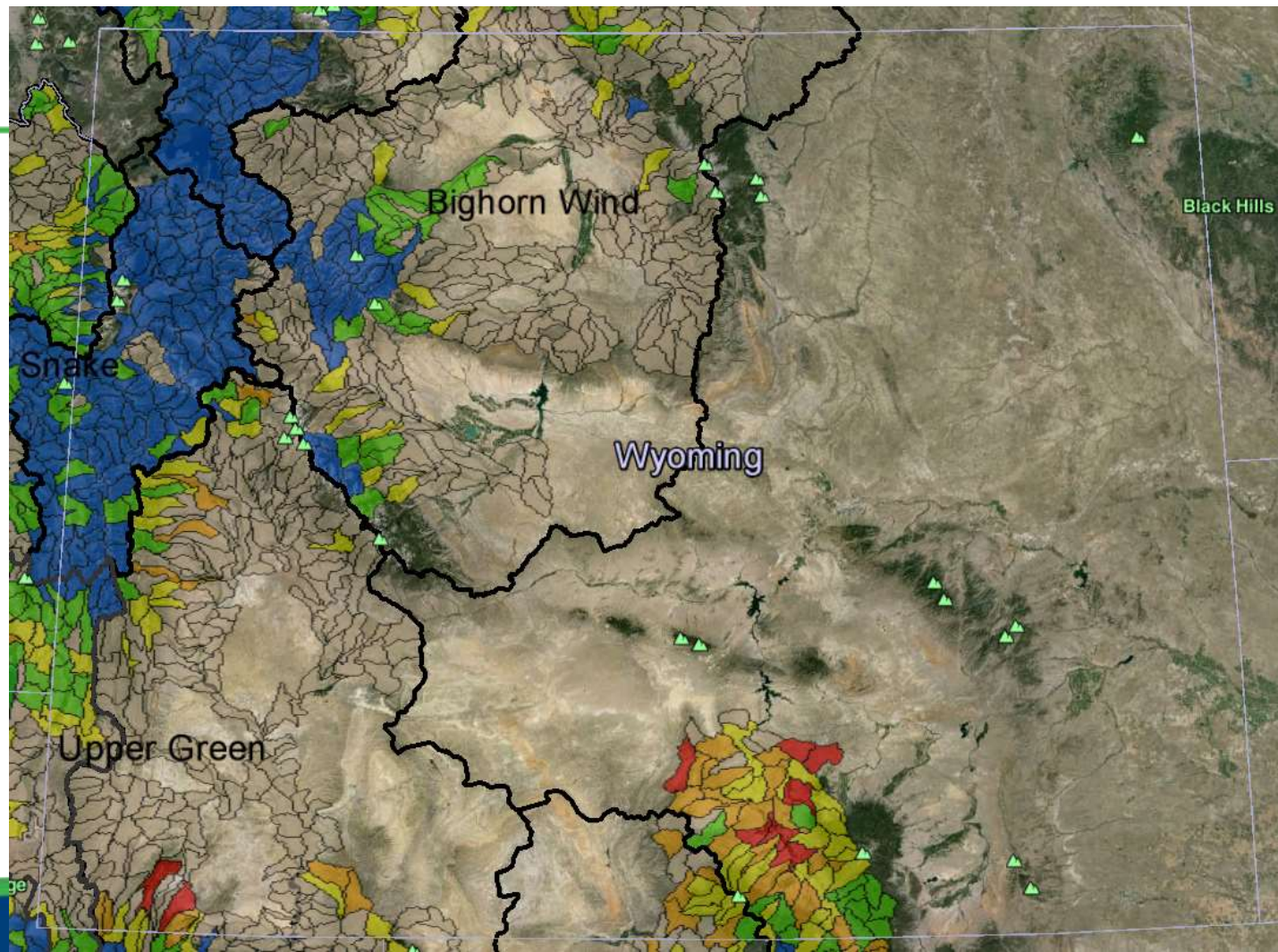
Protect: Intact wilderness areas, pristine headwater streams and other undeveloped backcountry are quite literally the last refuges for many native trout and salmon. TU advocates for responsible use and continued protection of these last, best places.

Reconnect: Fish must be able to migrate away from floods, fires, drought and other disturbances. TU works to improve and increase flows, remove obsolete dams and diversions, and fix perched or broken culverts.

Restore: Even if we protected all the remaining pristine land in perpetuity, it wouldn't be enough to sustain our fisheries. We must reclaim some of the land degraded by development and incompatible use. TU's grassroots volunteers donate thousands of hours every year to clean up their local streams and rivers.

Sustain: The next generation must know—and care—about TU's work for it to endure. Through youth education and other outreach efforts, TU works to create a new generation of stewards for our coldwater rivers.





The TU Business Plan in Wyoming



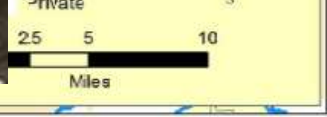
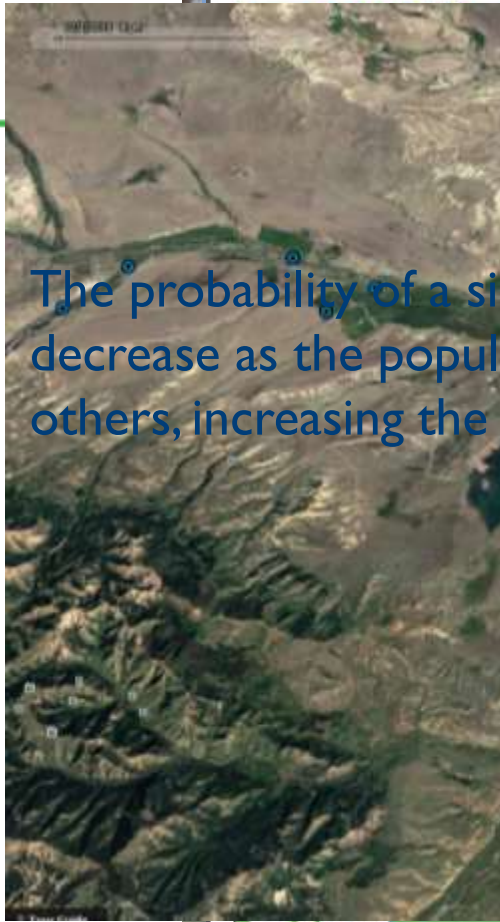
Freedom son, is a dirty shirt,
With the sun on my face and my shovel in the dirt

— Lyrics from *Shackled and Drawn* by Bruce Springsteen

- Over 100 completed projects
- Over \$15 million invested
- >1500 miles restored or reconnected
- ~2000 students reached through 28 AaT programs with 16 school districts



The probability of a single population persisting is generally considered to decrease as the population becomes smaller and more separated from others, increasing the genetic and stochastic risk of extinction





WYCO

A satellite view of Mountain King, New Mexico. The town is highlighted with a white outline, showing its layout and surrounding infrastructure. The surrounding landscape is rugged and mountainous, with a river visible in the foreground. The Google Earth logo and copyright information are visible in the bottom right corner.

A satellite view of Mountain King, New Mexico. The town is highlighted with a white outline, showing its layout and surrounding infrastructure. The surrounding landscape is rugged and mountainous, with a river visible in the foreground. The Google Earth logo and copyright information are visible in the bottom right corner.

A satellite view of Mountain King, New Mexico. The town is highlighted with a white outline, showing its layout and surrounding infrastructure. The surrounding landscape is rugged and mountainous, with a river visible in the foreground. The Google Earth logo and copyright information are visible in the bottom right corner.

A satellite map from Google Earth showing a mountainous region. A large area in the center is outlined in white, containing several smaller white-outlined polygons. The label 'MOUNTAIN KING' is visible near the top center, with a yellow pin. Other labels include 'MOUNTAIN KING' and 'MOUNTAIN KING' in the bottom right. The map shows rugged terrain with green vegetation and brownish-grey rocky areas. A river or stream flows through the landscape. The Google Earth logo and copyright notice '© 2016 Google' are visible in the bottom right corner.



An aerial photograph showing a road intersection. A map inset in the center shows a red line representing a road or boundary, with a road number '188' in a shield. To the right of the map is a white box containing the text:

 At

 Septe

 Oc

Satellite map showing the location of the study area in the northern part of the Khatanga River delta.

“Opportunity is all about you. Reach out and take it.”

Dwight D Eisenhower

“Nobody wants to hear a story about why something didn’t happen.”

Scott Yates and Pete Toye

Questions?

