

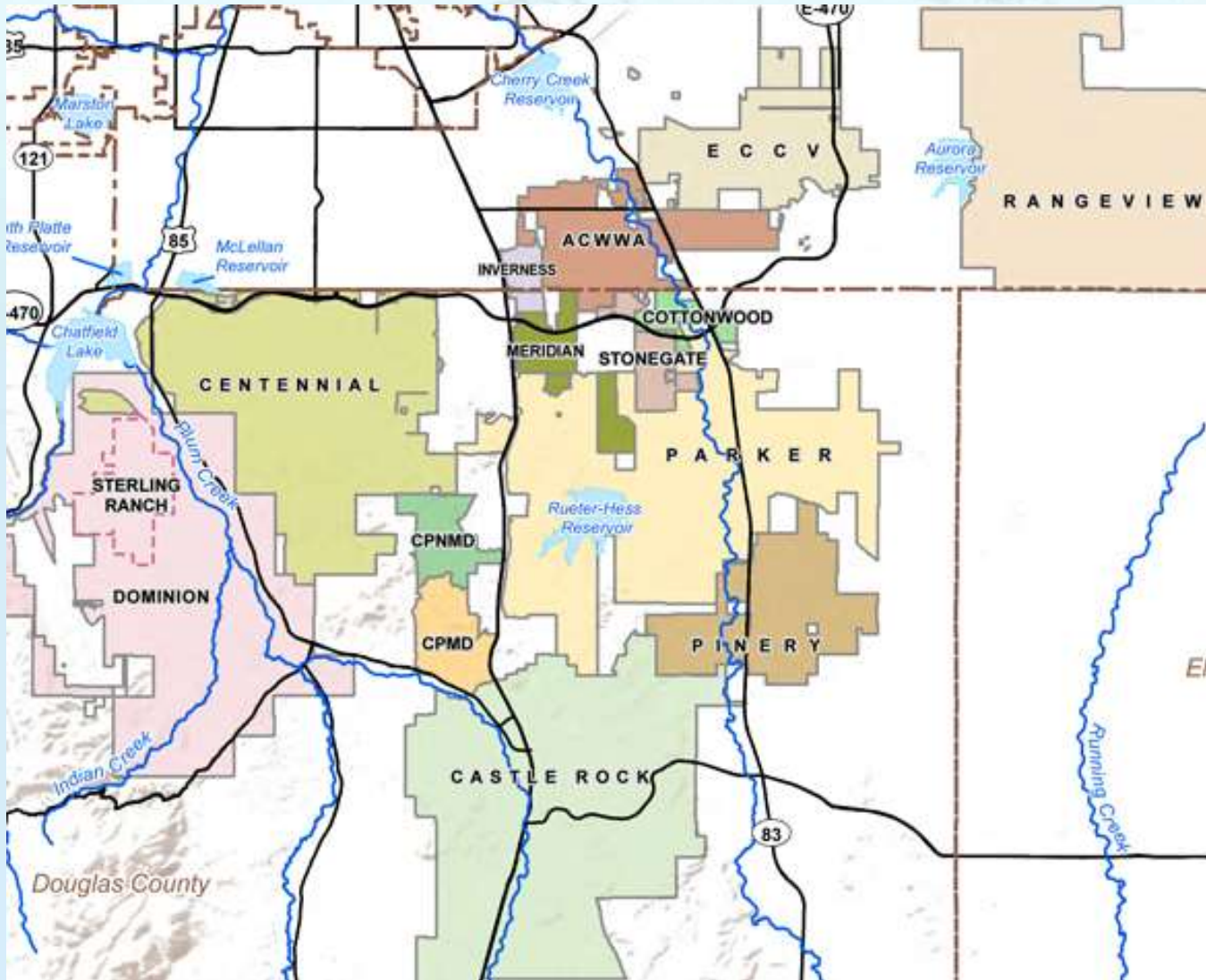
# Upper CO River Basin Water Forum

## ***Integrating multiple strategies to achieve a more sustainable water future***

Eric Hecox, Executive Director  
South Metro Water Supply Authority

October 29, 2015

# Who We Are and Our Members



**Arapahoe County**  
Water & Wastewater  
Authority

**Castle Pines North**  
Metropolitan District

**Centennial** Water &  
Sanitation District

**Cottonwood** Water &  
Sanitation District

**Dominion** Water &  
Sanitation District

**East Cherry Creek**  
Valley Water &  
Sanitation District

**Inverness** Water &  
Sanitation District

**Meridian** Metropolitan  
District

**Parker** Water &  
Sanitation District

**Pinery** Water &  
Wastewater District

**Rangeview** Metropolitan  
District

**Stonegate Village**  
Metropolitan District

# The Challenge



Searching for Ground Water

- Historical reliance on non-renewable groundwater
- Denver Basin Aquifers do not provide a sustainable long-term water supply for current residents or future generations
- Renewable water is essential for continuing the South Metro's thriving economy and quality of life

# Groundwater Levels in Decline



*Series from the 2003  
Rocky Mountain News*

# Our Plan

## An “All-of-the-Above” Strategy

We are executing a regional water supply plan to create *a secure and sustainable water future* for the region.

1. Efficiency (conservation, reuse), including land-use strategies
2. Partnership Projects – WISE, Northern Project
3. Storage – Rueter-Hess Reservoir, Chatfield Reallocation, ASR



# ASR Efforts

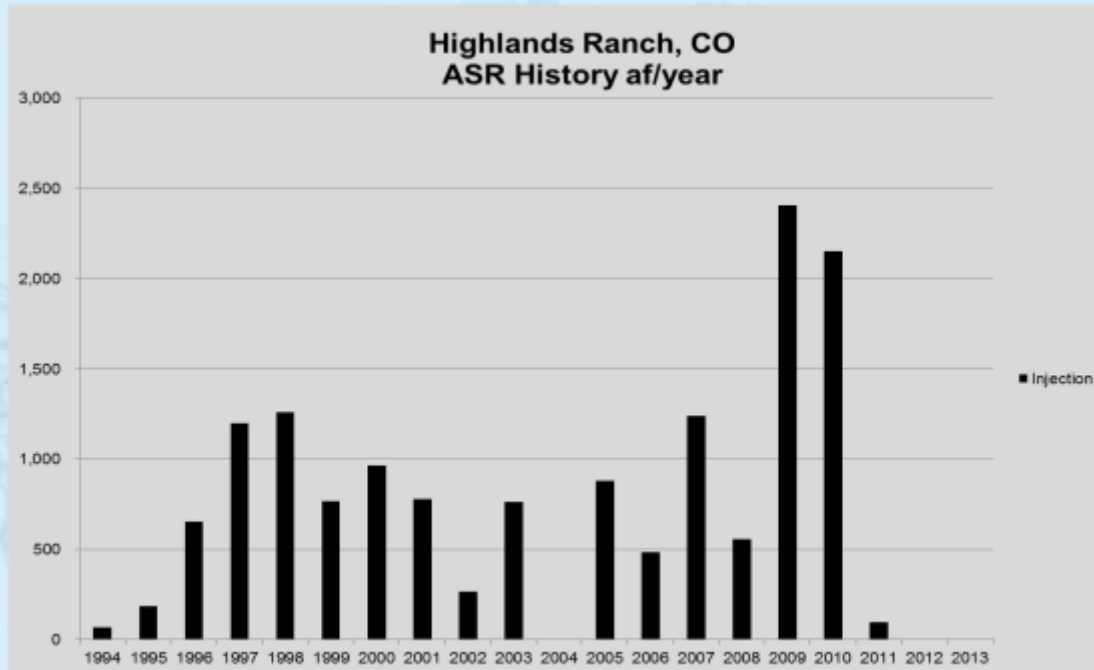
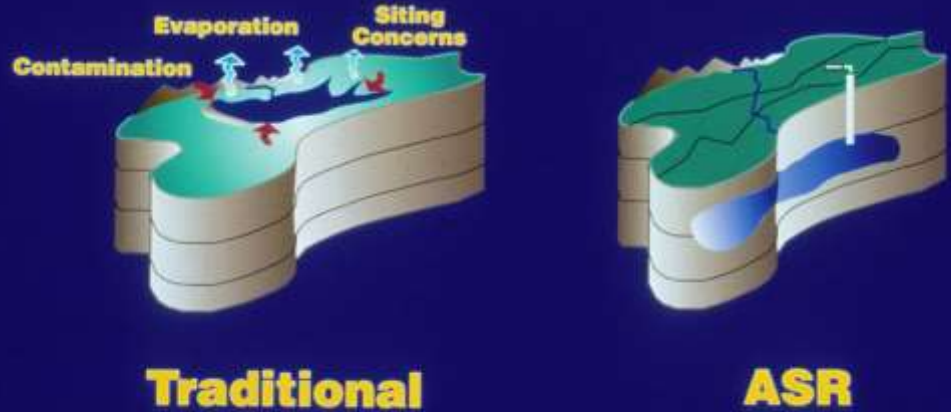
## Centennial/Highlands Ranch

- Successful implementation since 1994
- 25 wells equipped for ASR
- Accumulated Injection – 14,095af (nearly 1-yr supply)

## Current Pilot Projects

- SMWSA
- Castle Rock
- ECCV
- Denver Water

## Aquifer Storage And Recovery (ASR) May Provide Alternative Storage



## Integrating land-use and water in:

- Existing Communities
  - Water Budgets
  - Turf Replacement
- Redevelopment or New Development in areas zoned and platted for development
  - Tap Fee Incentives
  - Landscape Plans and Irrigation Technology
- New Development
  - Designing efficiencies into new developments from the beginning



# Integrating Land-Use and Water

**What works in different overlapping jurisdictions?**





# The South Metro Approach and Progress

**Conservation:** 30% reduction in per capita water use since 2000

**Efficiency:** Most members are approaching full reuse of their reusable supplies

**Diversified supply:** Aquifer declines have slowed considerably since late 1990s (from 30 feet per year to 5 feet per year)

**Renewable sources:** projected to be a majority of the region's supply by 2020

**--If our plans and projects are successful--**

## Watch our Progress

[www.southmetrowater.org](http://www.southmetrowater.org)



<https://www.facebook.com/SouthMetroWater>



@SouthMetroWater