



# Upper Colorado River Water Forum

November 2014  
Mely Whiting  
Trout Unlimited

TROUT UNLIMITED'S MISSION IS TO CONSERVE,  
PROTECT AND RESTORE NORTH AMERICA'S  
COLDWATER FISHERIES AND THEIR WATERSHEDS





**TWO FORKS**

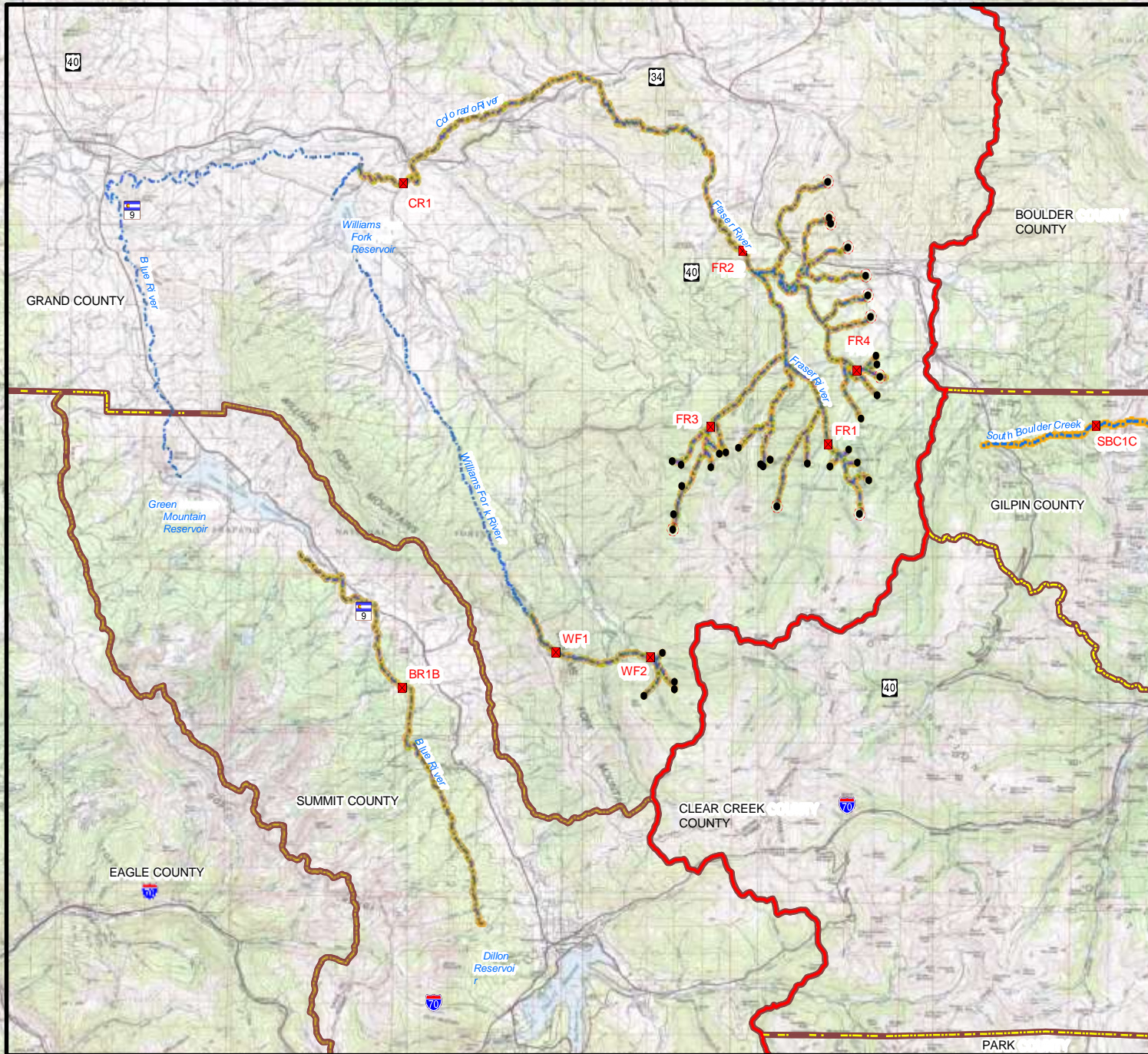




## Filling the Gap

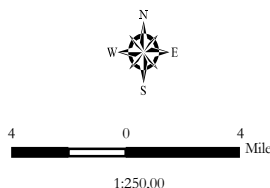
Commonsense  
Solutions for Meeting  
Front Range Water Needs





- Diversions
- USFS Bypass Flow
- Locations Representative
- Sampling Sites Overall Study
- Area Segments Focus River
- Segments Counties
- ▭ Continental Divide

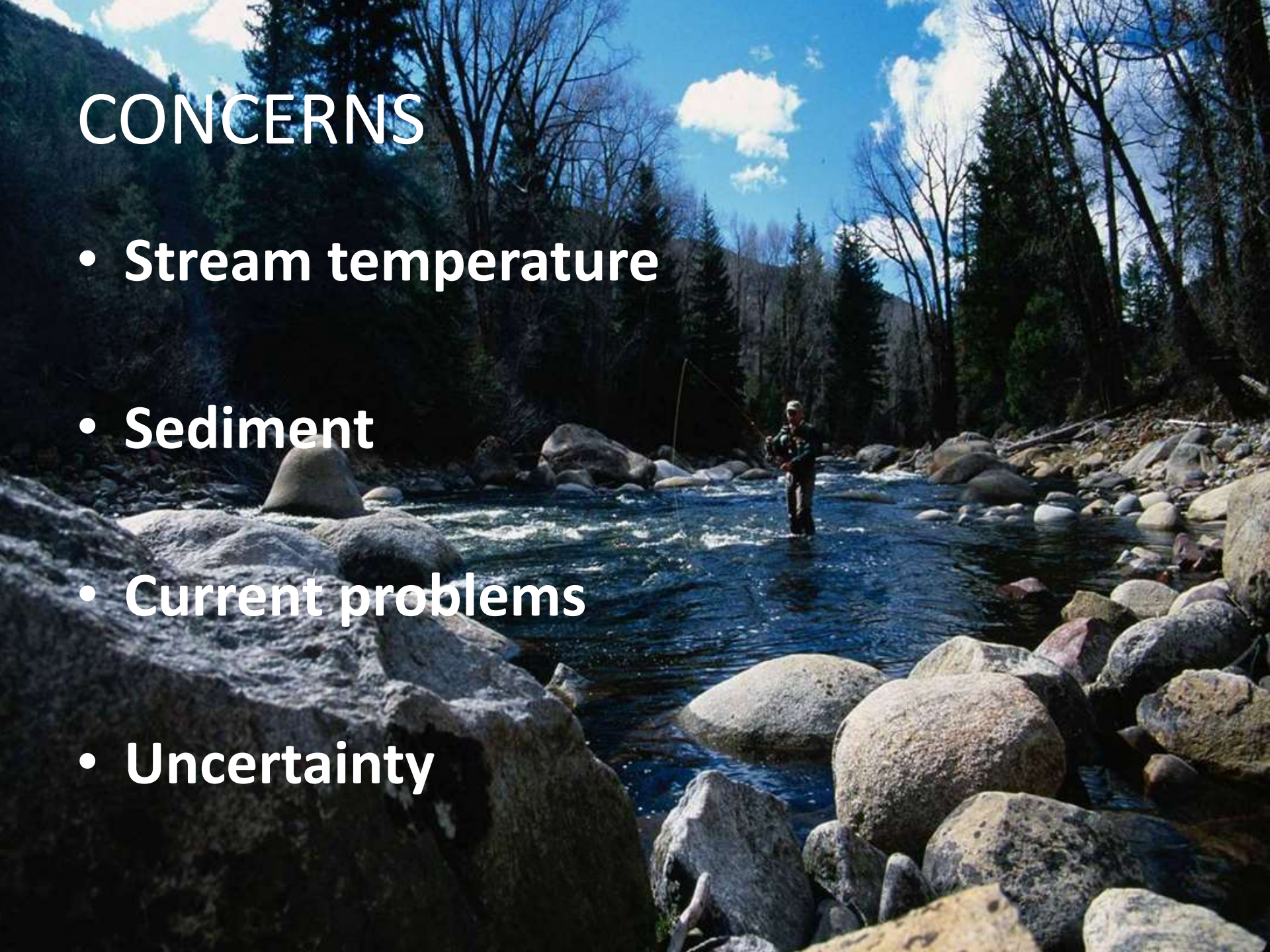
References:  
 1:100,000-scale quad maps originally from USGS (1980s) and created with TOPOI, 2006 National Geographic Maps, All Rights Reserved.  
 Diversions from Denver Water.



Moffat Collection System Project  
 EIS  
**Figure 3.0-2**  
**Focus River Segments**  
 West Slope  
 9/16/0

# CONCERNS

- **Stream temperature**
- **Sediment**
- **Current problems**
- **Uncertainty**



# Mitigation and Enhancement Coordination Plan

An aerial photograph of a river winding through a forest. The trees are mostly yellow and orange, indicating autumn. The river is blue and flows from the top left towards the bottom right. The background shows a mix of green and yellow trees, suggesting a transition in seasons or a specific type of forest.

- **Mitigation vs. Enhancements**
- **Mitigation**
  - **Stream Temperature**
  - **Flushing Flows**
  - **Cutthroat Mitigation**
  - **Restoration Funds (\$750,000)**

# Mitigation and Enhancement Coordination Plan - Enhancements

- **Monitoring Program**
  - Define stream conditions
  - Stream temperature
  - Channel stability / sediment
  - Macroinvertebrates
  - Riparian areas and wetlands

# Mitigation and Enhancement Coordination Plan - Enhancements

- **Grand County CRCA resources**
  - Water
  - Money
  - Operational flexibility
- **Administered through LBD**
- **Timing of resource availability**



# Mitigation and Enhancement Coordination Plan - Enhancements

- **Fish and Wildlife Enhancement Plan (Colorado River)**
- **Wild and Scenic River Funding**
- **Forest Restoration Funding**
- **Increased bypasses**

# Mitigation and Enhancement Coordination Plan



- **Mitigation + Enhancement =  
Improved Conditions**
- **Enforceability**
  - IGAs
  - 404 permit condition