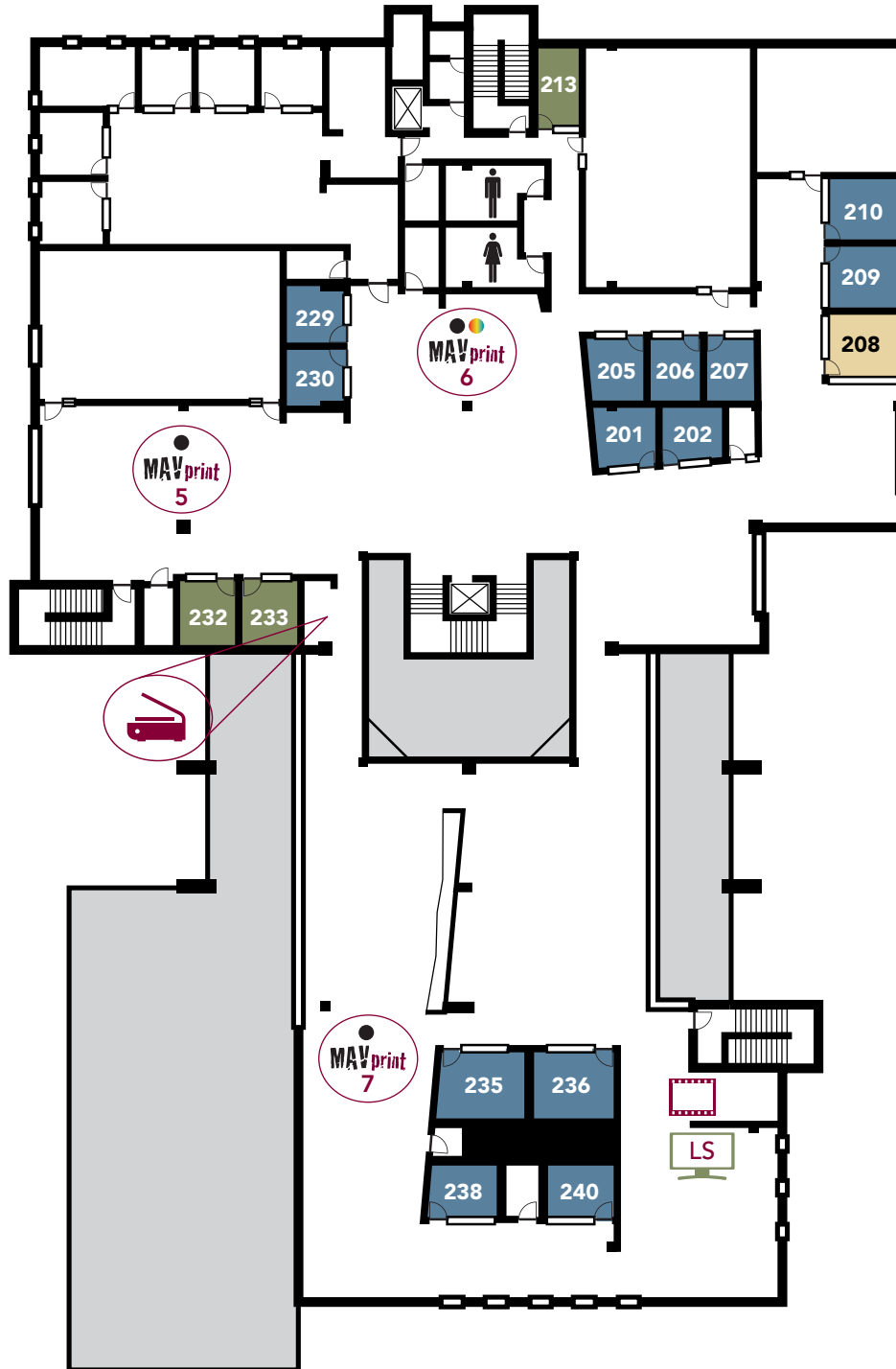










# TOMLINSON LIBRARY BUILDING DIRECTORY

## Second Floor



### Legend

- MAVprint** Printers
-  KIC Scanner
-  Look Up Station
-  Group Room with A/V & Computer
-  Group Room with Computer Only
-  Family Study Room w/Computer Only
-  Microfiche Station
-  Black/White Printer
-  Color Printer



COLORADO MESA  
UNIVERSITY