

CMU Facilities Newsletter

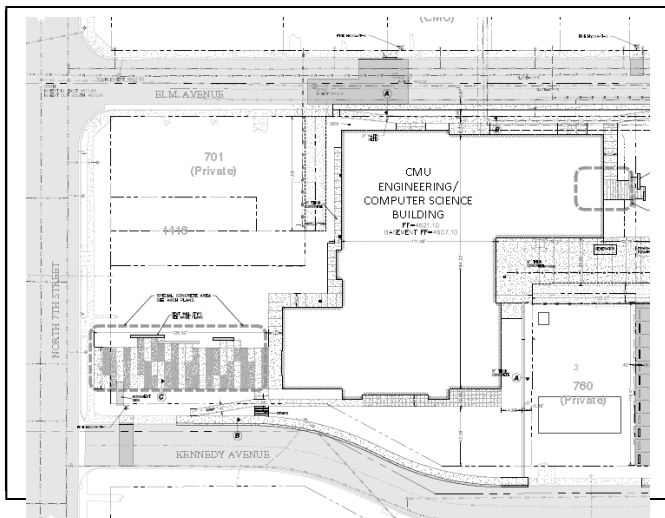
September, 2016

What is happening?

Facilities Services will spray for broad leaf weeds in turf areas across campus the week of September 12-16. Work will be performed by a local, licensed contractor, during the early morning hours. Spraying for weeds in the fall allows both annual and perennial weeds to be killed, and gives CMU's turf a head start going into next year's growing season.

Engineering Building

CMU will begin work on a new 68,700 square-foot building that will house civil and mechanical engineering programs at CMU. The new building will span the block between Kennedy and Elm, east of 7th Street. Construction will begin in late September, 2016 and will continue through October, 2017. The project will not impede local traffic.



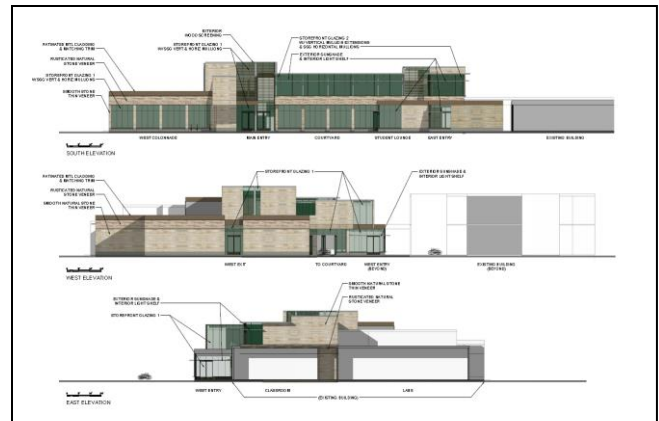
How do I get more information and who should I call with questions?

Jack Hughes – Superintendent, Shaw Construction (970-471-0448)

Kent W. Marsh, P.E. – Director of Facilities Services, Colorado Mesa University (970-248-1339)

Health Sciences

Work continues on the new Health Sciences building at what used to be Community Hospital. Phase I of the project will be delivered in October, 2016, while Phase II will be delivered on or before August 1, 2017. Phase I construction includes administrative offices, flex labs, new classrooms, and new computer lab. Phase II construction includes a new radiology lab, Medical



Technology lab, and simulation labs for health sciences.

How do I get more information and who should I call with questions?

David Howland – Superintendent, Shaw Construction (970-401-0877)

Kent W. Marsh, P.E. – Director of Facilities Services, Colorado Mesa University (970-248-1339)

Thank you

Colorado Mesa University and Shaw Construction thank you for your patience during construction.