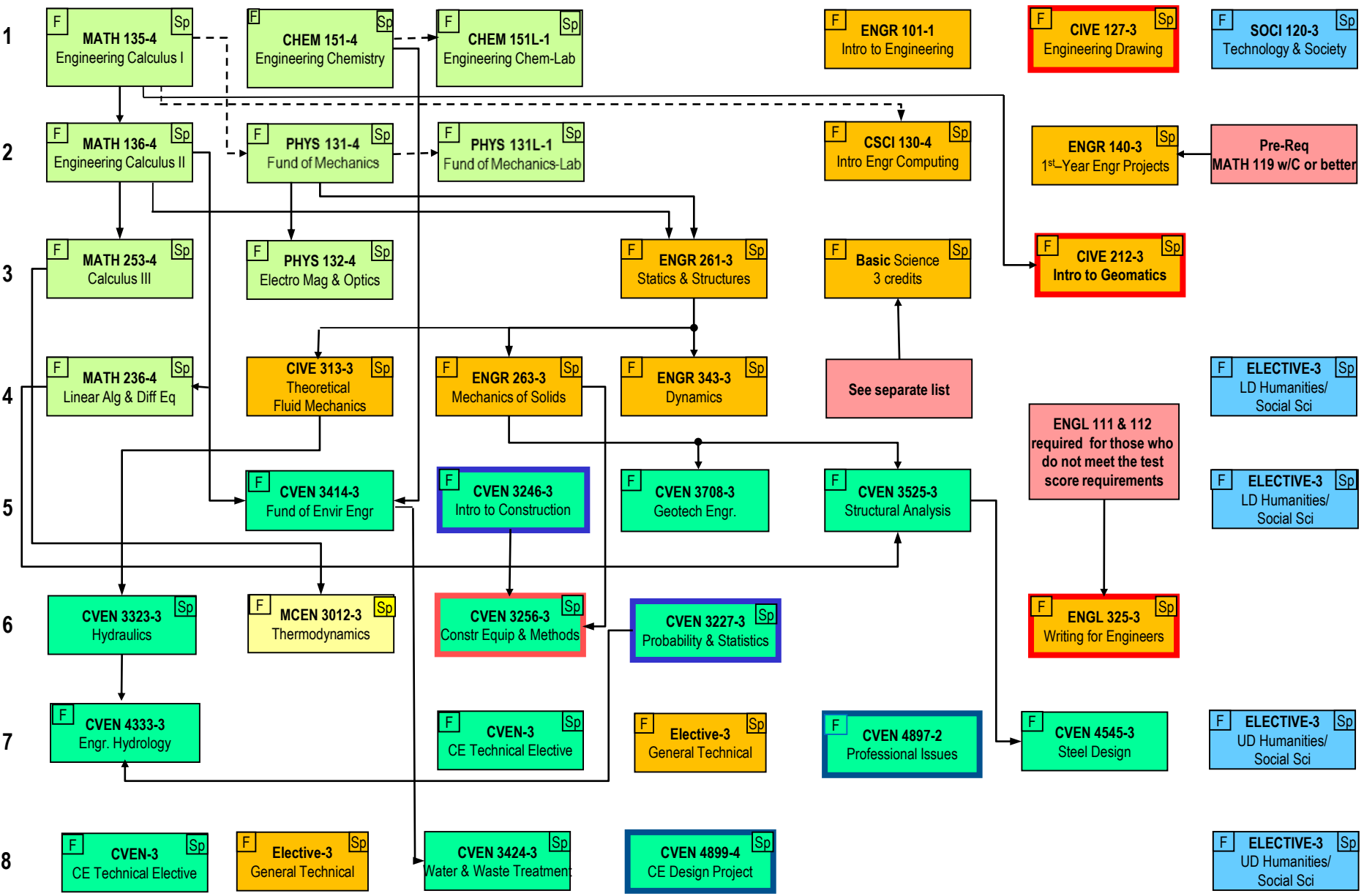


SEMESTER

CMU/CU PARTNERSHIP CIVIL ENGINEERING CURRICULUM



F Sp = Semester usually taught
 Pre-requisite →
 Co/Pre-requisite - - - →
Pre-Req: Jr or Sr CE standing
Complete before CVEN 4899

Info
CU CE Course
CU ME Course
Math & Science
CMU Engineering
Humanity & Social Sci
Effective 2020-2021