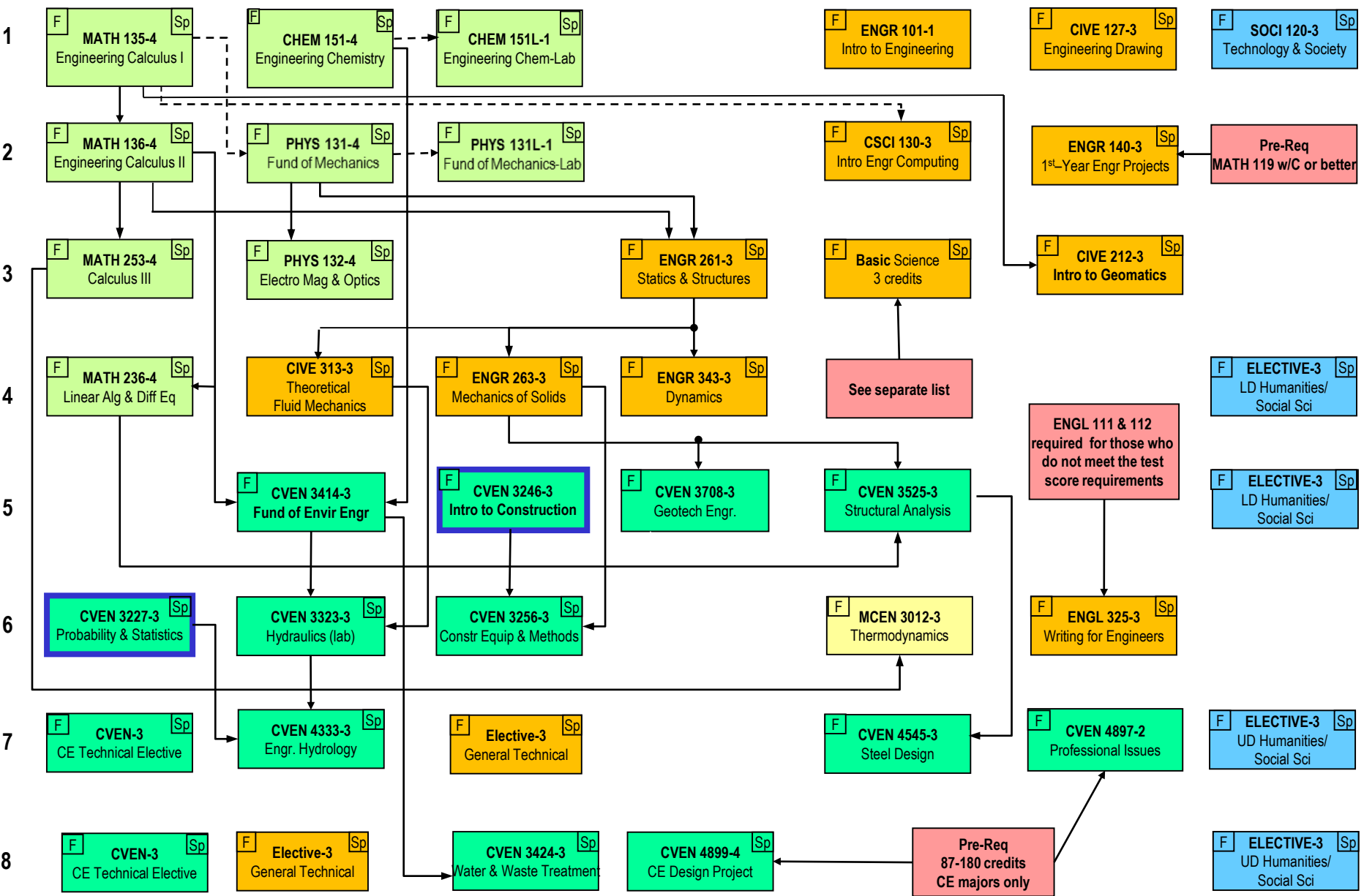


# SEMESTER

# CMU/CU PARTNERSHIP CIVIL ENGINEERING CURRICULUM



F Sp = Semester usually taught    
 **Pre-requisite** →     **Co/Pre-requisite** - - - →    
 Pre-Req Jr or Sr standing    
Effective 2019-2020

Info  
CU CE Course  
CU ME Course  
Math & Science  
CMU Engineering  
Humanity & Social Sci