



2019 Energy & Environment Symposium

Oil and Gas Planning and Emergency Action Plans

Roy Rudisill, Emergency Manager, Weld County

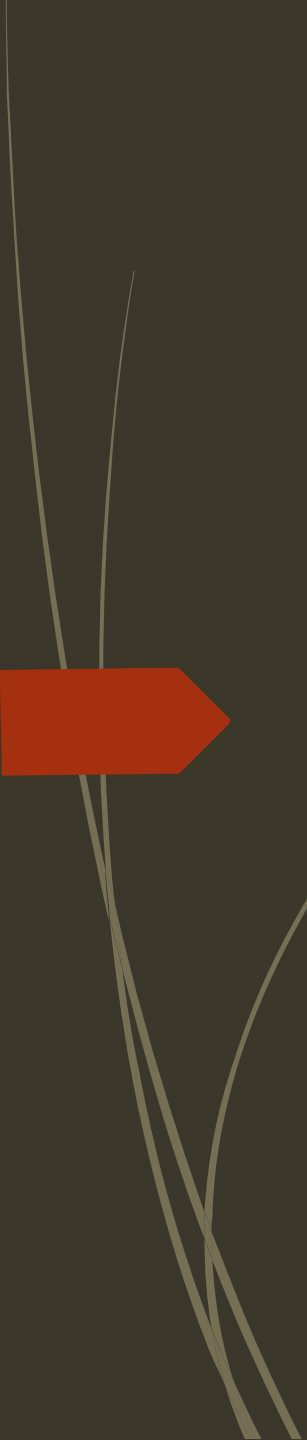




Planning Process



- Weld County Oil and Gas Working Group (Planning Department)
 - Started by our Planning Department and supported by the Oil and Gas Industry in March 2016.
- Weld County Code Change (Planning Group)
 - After several months of meetings and review of the County Code, the BOCC adopted the changes. The Code changes went into effect in Feb 2017.
- Weld Oil and Gas Location Assessment (WOGLA)
 - The permit process provides several steps but the two that are very important from the LEPC/ OEM view is the Site Review or Emergency Action Plan Development and the ability for All interested parties to be involved in the process.



Tactical Response Plan, EAP, Site Specific Emergency Plan and ERP???

- Which one is correct?
- Working with the Industry and Local Fire Districts we had to allow our Industry partners to work within their planning process and guidance from their EHS Leadership.
- We utilized a Template and adjusted it as we started the review process. Identifying best practices from Industry and Local Government to meet our needs.
- We have finalized our terms as; Emergency Action Plan to be consistent with County Code and Tactical Response Plan for the First Responder information sheet.



Briggsdale Colorado



BADGER CGF

Weld County
6512 County Road 6
Brighton, CO 80603

N 40.02742, W -104.92973

NOTIFICATIONS

1. Elevation 24-Hour Hotline
720-370-5540
2. National Response Center:
800-424-8802
3. Colorado Department of Natural Resources
303-866-3311
4. EPA Region VIII
303-312-6312
5. Weld County Communications
911
6. Weld County OEM
970-350-9600
7. Colorado Oil and Gas Conservation Committee
303-894-2100
8. Colorado Dept of Public Health and Environment
877-518-5608

RESPONSE OBJECTIVES

Ensure safety of the public, first responders, Elevation employees, and contractors. Minimize the impact to the environment and local community. Contain and recover released product to the extent possible.

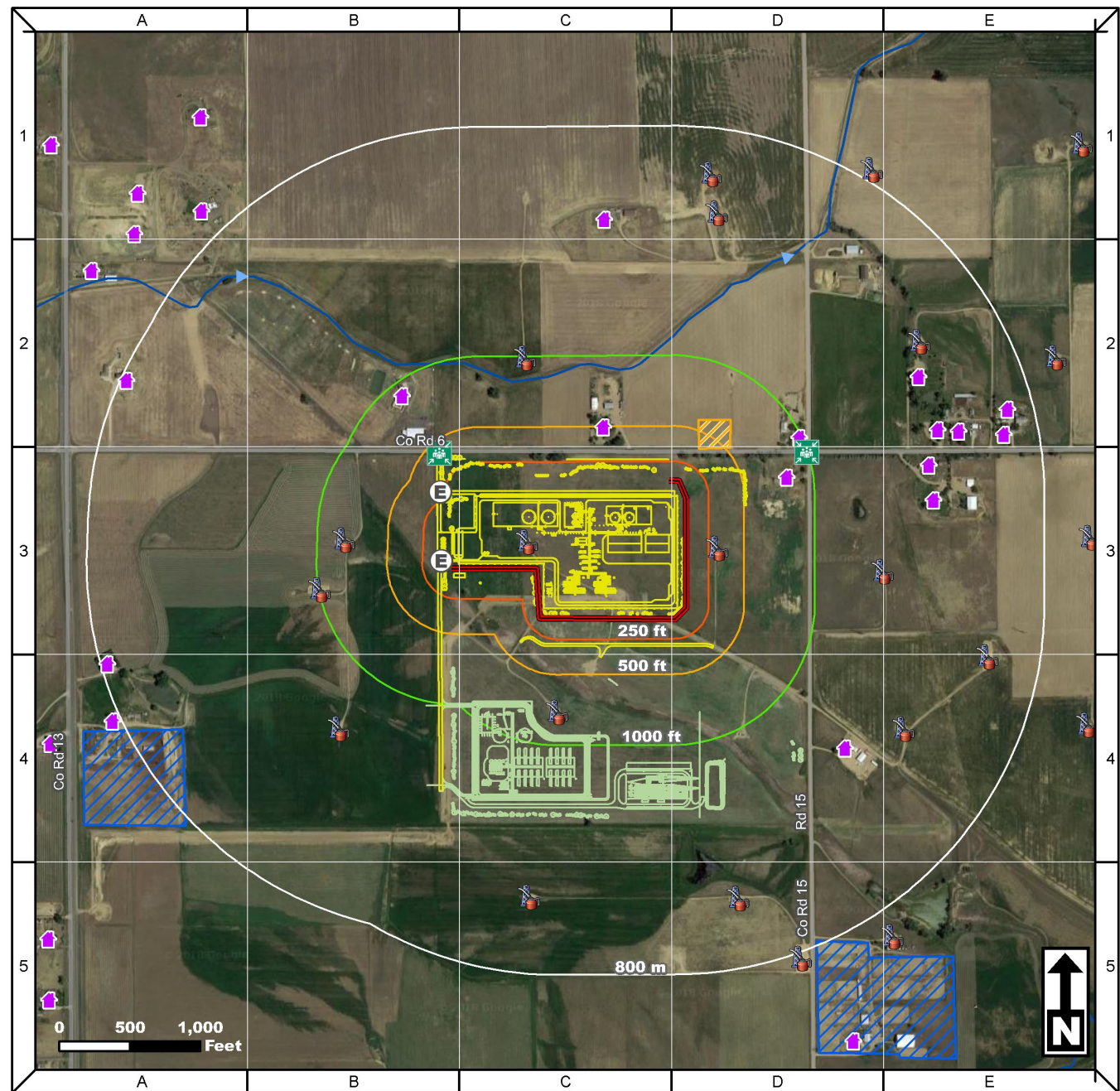
CRITICAL RECEPTORS

1. Buffalo Compressor Station (south of CGF)
2. Surrounding Residential Properties
3. Surrounding Oil/Gas Facilities
4. Nearby crops and livestock

Note: This Tactical Response Card is a reference tool and is intended to provide guidance during an actual event or exercise. Placement of resources may need to be adjusted according to environmental variables. It is the responsibility of emergency response personnel to be trained in response and to be able to make adjustments to the card as needed.

Developed by CTEH, LLC

Version: 0.3 2/27/2019



- | | | | | |
|--------------|--------------|-----------|---------------------|--------------|
| Badger CGF | Site Access | Berm | Oil/Gas Facility | Stream/Canal |
| Staging Area | Muster Point | Residence | Potential Livestock | Buffalo CS |

TACTICAL RESPONSE

After assessing the incident level and contacting the appropriate parties, the following steps will need to be taken for the tactical response:

1. Implement National Incident Management System (NIMS) Incident Command System (ICS)
2. Assess hazards to site, workers, and public
3. Safety Officer should complete form ICS 208 – Safety Message/Plan
4. Conduct Job Safety Briefing
5. Assess property and environmental impacts
6. Develop ICS 201 Incident Briefing and ICS 202 – Incident Objectives
7. Implement response actions:
 - a) Confine spills to tanks/vessels
 - b) Locate leading edge of spilled material
 - c) Contain spills on ground and any surrounding drainage ways
 - d) Recover spilled materials
 - e) Dispose of recovered materials properly
8. Document site conditions and activities
9. Document impacts to natural, economic, and cultural resources
10. Document site restoration/remediation activities

See the Elevation Emergency Response Plan for the full list of NIMS ICS Forms.

STATS

COMPRESSOR STATION FLOW STATS – 30 DAY AVERAGE IP

Gas (MCF/D)	Oil (BBL/D)	Water (BBL/D)
-------------	-------------	---------------

GATHERING FACILITY LIQUID STORAGE

Gas (BCF)	Oil (BBL)	Water (BBL)
-----------	-----------	-------------

RESPONSE RESOURCE CONTACT INFORMATION

ELEVATION MIDSTREAM CONTACT INFORMATION

Name	Main Phone
24-Hour Hotline	720-370-5540

NEAREST LEVEL II TRAUMA CENTERS

Name	Address	24-Hour Phone
Good Samaritan Medical Center	200 Exemplar Cir Lafayette, CO 80026	303-689-4000
Boulder Community Foothills Hospital	4747 Arapahoe Avenue Boulder, CO 80304	303-415-7000

STATE, FEDERAL, MUNICIPAL EMERGENCY RESPONDERS

Name	24-Hour Phone
Weld County Communications	911
Weld County OEM	970-350-9600
Weld County Sheriff's Office	970-350-9600
Brighton Fire Protection District	303-288-1535
National Response Center	800-424-8802
Colorado Dept of Natural Resources	303-866-3311
Colorado Department of Public Health and Environment (CDPHE) – Water Quality Division	303-692-3500
EPA Region 8	303-312-6312
Department of Transportation	855-368-4200

RESPONSE CONTRACTORS

Contractor Type	Name	24-Hour	Phone
OSRO	Belfor Environmental	800-930-0011	303-425-7526
OSRO	Custom Environmental	800-310-7445	303-423-9949
Well Control	Boots & Coots	281-931-8884	800-BLOWOUT
Well Control	Wild Well	281-784-4700	281-784-4700
Environmental	CTEH, LLC	866-869-2834	501-801-8500
Environmental	APEX Companies, LLC	970-260-5457	307-399-2870
Response Management	CTEH, LLC	866-869-2834	866-869-2834

SITE TANKAGE

✦Two (2) 5,000 bbl Off-Spec Oil Storage Tanks	✦One (1) 300 bbl Methanol Tank
✦Two (2) 750 bbl Trucked-In Off-spec Oil Tanks	✦One (1) 500 gal Lube Oil Tank
✦Two (2) 20,000 bbl Inlet Water Tanks	✦One (1) 500 gal Diesel Tank
✦Two (2) 24,000 bbl Produced Water Tanks	✦Seven (7) Miscellaneous Tanks
✦Three (3) 40,000 bbl Stabilized Oil Tanks (2 current, one future)	{Methanol, Frame Oil, Fire Foam, Skid Drain}

RESPONSE OBJECTIVES

Ensure safety of the public, first responders, Elevation employees, and contractors. Minimize the impact to the environment and local community. Contain and recover released product to the extent possible. The following response objective checklist shall be followed:

SAFETY – PROTECT LIFE

- ✦ Evaluate and account for all personnel
- ✦ Isolate all potential ignition sources
- ✦ Initiate emergency services immediately, as needed (911, Fire, LEPC)
- ✦ Identify hazard(s) of emitted material (obtain SDS)
- ✦ Establish site control (safe perimeter and evacuation routes)
- ✦ Monitor air in impacted areas
- ✦ Develop Site Safety Plan (ICS 208) and Medical Plan
- ✦ Continually assess site hazards and risks

RESPONSE – INCIDENT STABILIZATION

- ✦ Conduct notifications to external agencies and internal personnel
- ✦ Identify and implement staging areas to support response operations
- ✦ Activate response company for equipment and manpower as needed
- ✦ Activate response tactics to contain and recover product/material
- ✦ Establish command post and field communications
- ✦ Establish flight traffic restriction if required
- ✦ Implement waste handling and disposal procedures as required
- ✦ Initiate decontamination and demobilization procedures when appropriate
- ✦ Assign on-site liaison to the incident commander

ENVIRONMENTAL – PROTECT THE ENVIRONMENT

- ✦ Identify, prioritize, and protect environmentally sensitive areas
- ✦ Establish wildlife rescue rehabilitation operations if required
- ✦ Verify release if waters are impacted
- ✦ Conduct visual assessments (spill tracking and surveillance)




Southern Weld County



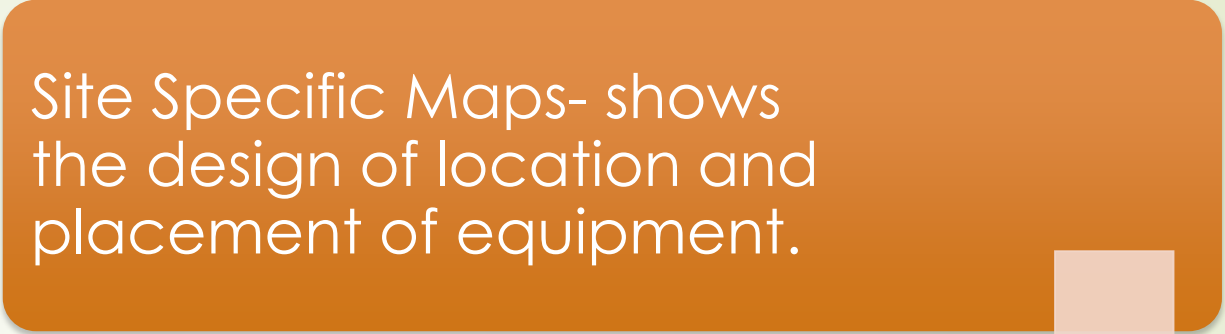
Emergency Action Plan (EAP)

- What's in the Plan?
 - Scope- address potential emergency response issues for Drilling, Completion and production
 - Regulatory Requirements- the plan is prepared to meet the Land Use Requirements of Weld County. "Best Management Practices", safety, health and environments.
 - Location of Wells and Equipment- Address, Section Township and Range Lat-Long and direction to gain access to the site. A description of the equipment that will be on site during production.
 - Emergency Contact List- Contact names and numbers for each of the phases of development and the local agencies having jurisdiction.
 - Spill / Release Reporting- Reporting process and clean up is documented and identifies the local contacted to report to at the County.
 - Safety and Fire Prevention Guidelines-Best practices and COGCC rules, Local Fire Prevention. Location of Hospitals and Burn Centers.




Documents that support the planning process

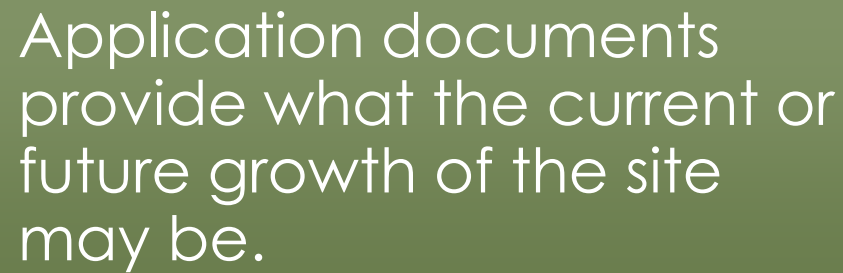
Site Specific Maps- shows the design of location and placement of equipment.



Maps provide an understanding of existing critical receptors.



Application documents provide what the current or future growth of the site may be.





Planning and Coordination- How it helped!

- Coordination with the Planners (County and Industry) helps to understand the risk and threat to the area once the site goes into production.
- Local Code changes helped with all parties involved, better communication with Citizens, First Responders and Industry.
- Better relationships on land use development, Citizens have a local process for Oil and Gas development.
- Emergency Management and Fire Districts have a better process for requesting mitigation actions at Well Pad locations.
- This is an ever growing process and we continue to review and improve our processes.

LIVE



FIRE AT WELD COUNTY OIL SITE
OFF COUNTY ROADS 30 & 47.5

**BREAKING
NEWS**



Lessons Learned and Improvements

On going process for review and updates to planning process.

Addressing of Well Pad location, help with response for First Responders.

Understanding what process is taking place during the different phases, Construction, Drilling, Completions, Production.

Development of 101 training for Industry and First Responders.

Understanding the hazards at the Well Pad location starting with Construction through Production.

Coordination meetings with FRERC, continued input from Industry and First Responders on response and reviewing incidents (Large and small).

Planning meetings with Industry and OEM staff.

Increased participation with Local Emergency Planning Committee.

Questions

Roy Rudisill

970-304-6540

rrudisill@weldgov.com

