

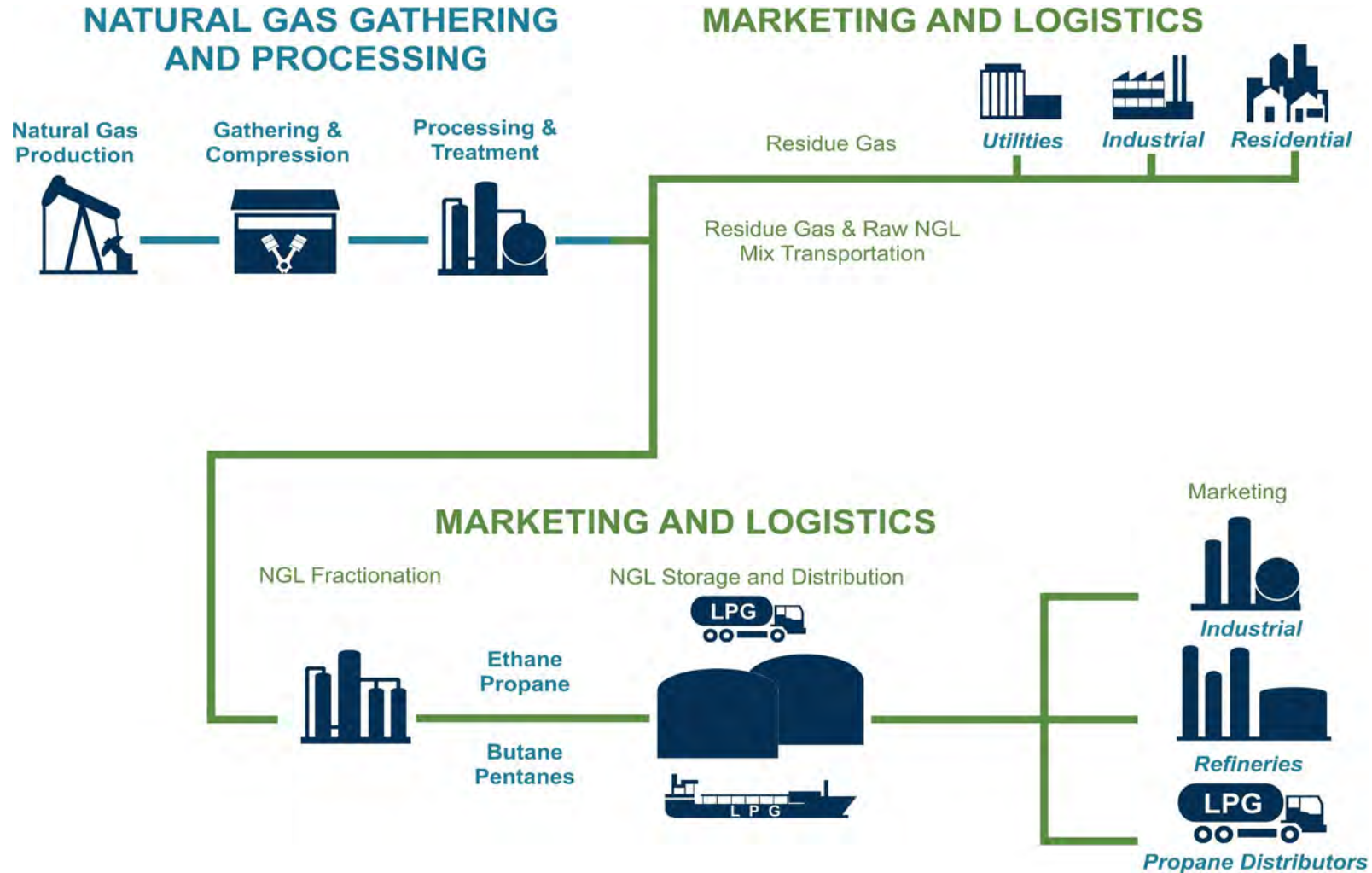


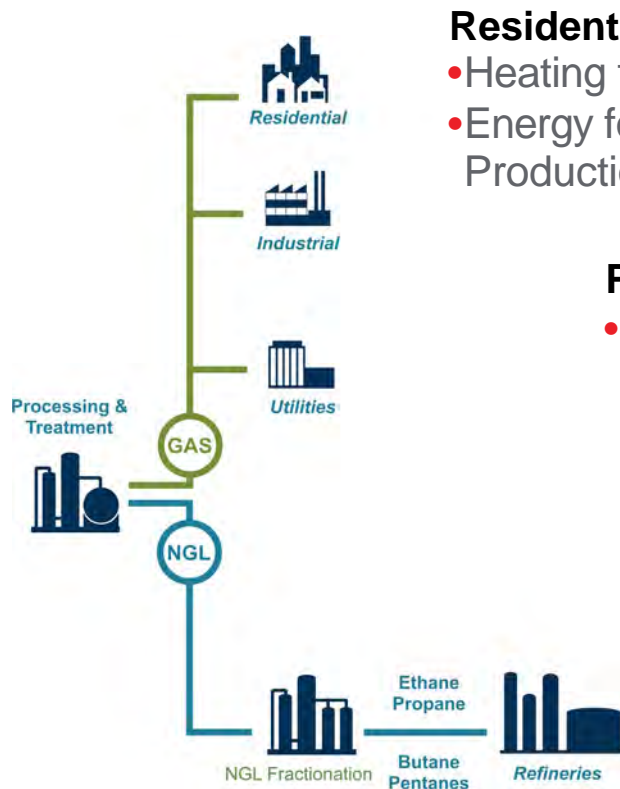
MIDSTREAM OPERATIONS

David Jost

Vice President

DCP Midstream





Residential and Industrial

- Heating for Homes and Businesses
- Energy for local industries including Manufacturing, Food Production, and Agriculture

Power Generation

- Over 30% of the Nation's electric power comes from Natural gas!

Products

- Plastics and Rubber
 - Tires
 - Electronics
 - Automotive and Aerospace
- Gasoline, Detergents, and Fertilizer
- Many other household items!



Operational Safety

- OSHA and DOT Regulations
- See Something, Say Something –Employee driven safety
- Detailed Facility Siting



Construction safety

- Dedicated safety inspectors
- Detailed Safe Work Planning and daily Safety Tailgate meetings
- Stop work authority



Facility Security

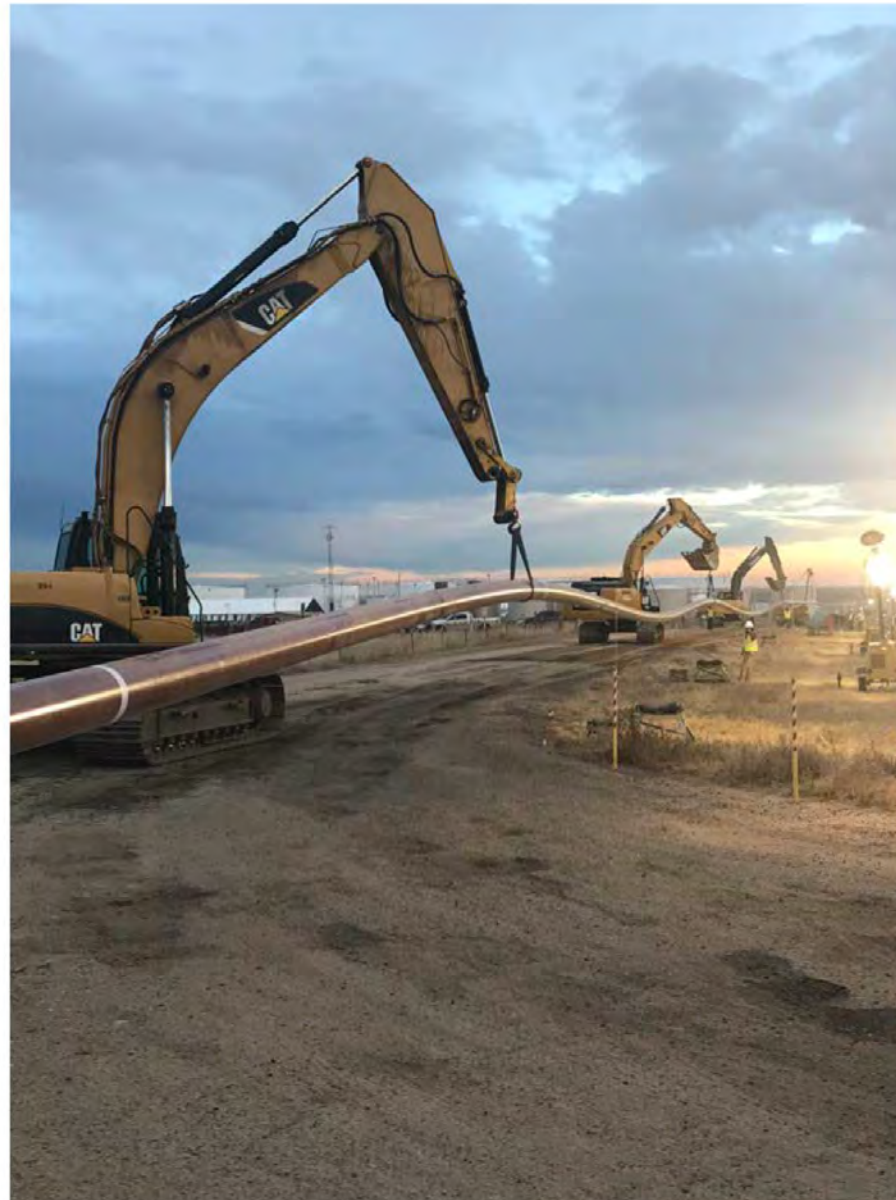
- Security checkpoints restrict entry to the facility control room
- Full perimeter security fence
- Security camera monitoring of the entire facility



Call Before You Dig

- One phone call can prevent injury and protect the environment
- Be an advocate for your neighborhood

New Pipe



U.S. Environmental Protection Agency

✓ Water Quality

- ❖ SPCC – Spill Prevention, Control, and Countermeasure
- ❖ SWPP – Storm Water Pollution Prevention Plan

✓ Air Quality / Air Emissions

- ❖ Air Emissions Prevention
- ❖ NSPS - New Source Performance Standards
- ❖ MACT - Maximum Achievable Control Technology

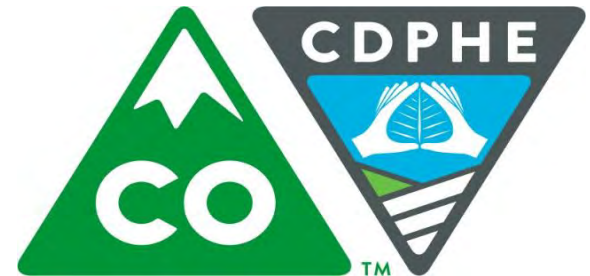
✓ Waste

- ❖ RCRA - Resource Conservation and Recovery Act



Colorado Department of Public Health and Environment

- ✓ Construction and Operating Air Permits
- ✓ Storm Water Permits
- ✓ Greenhouse Gas Emission Prevention



Colorado Oil & Gas Conservation Commission

- ✓ Spills & Remediation



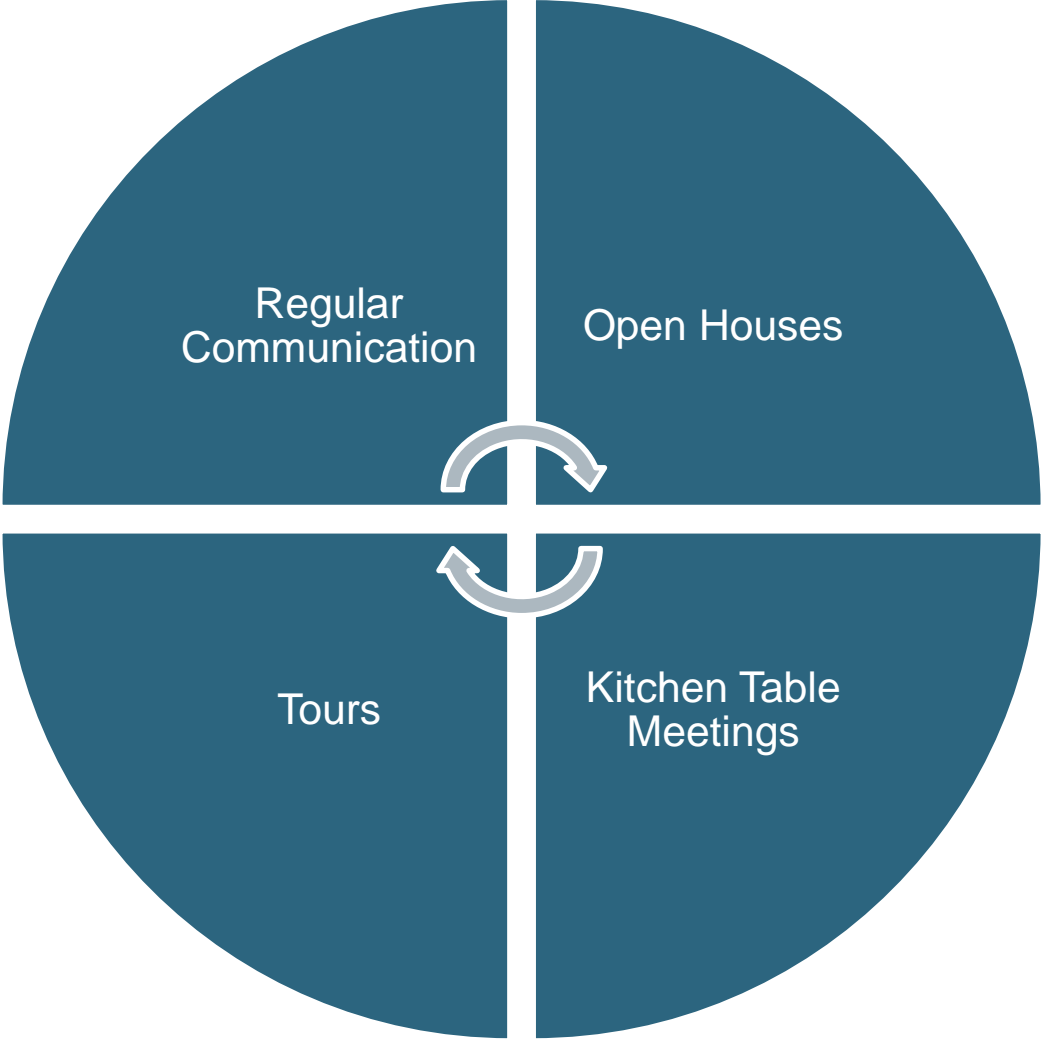
Engineering and Controls

- Emissions control devices – combustors and flares
- Low emissions equipment – high efficiency burners, process vent recycle
- Daily environmental monitoring, inspections, data collection and review
- Leak detection and repair programs



Reporting and Investigation

- Self reporting known deviations from environmental requirements
- Startup, Shutdown, and Malfunction reporting
- Annual emissions reporting
- Supporting agency inspections
- Completing internal audits and implementing corrective actions



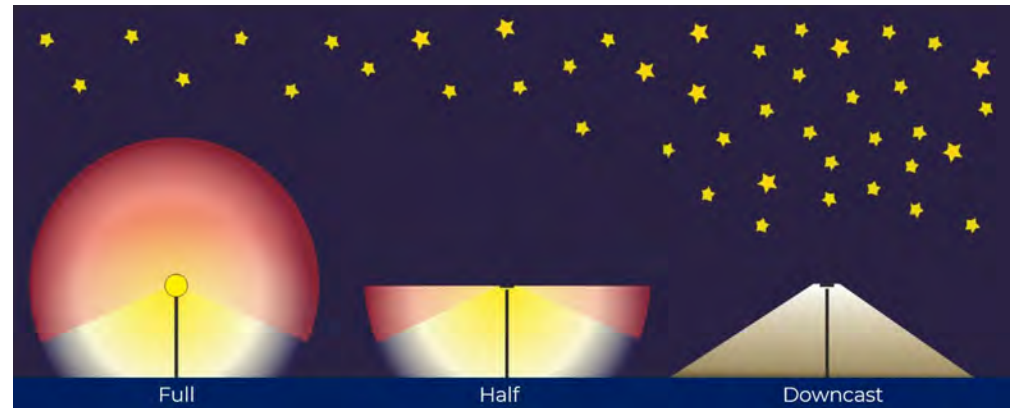


Sound Mitigation

- Major rotating equipment will be enclosed in insulated buildings to reduce sound impact

Light Mitigation

- Downcast LED Lighting
- Dark Skies - Lights off at night, except when operators are working on equipment



Enclosed Building







Phase 1

Grading and Earth Work

The site is graded and prepared for construction



Phase 2

Foundation

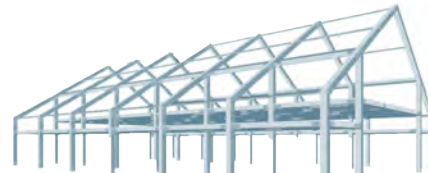
Concrete foundation is poured



Phase 3

Steel Structure

Supports and pipe racks are installed



Phase 4

Installation of Equipment & Buildings

Equipment and vessels are installed



GAS PLANT

Phase 5

Piping and Welding

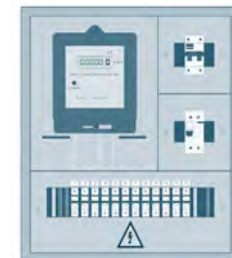
Pipe is installed and welded



Phase 6

Electric Wiring

Equipment is wired to electrical power









9/26/17



Steel Structure and Pipe Racks



Buildings and Pipe Rack





Slug Catcher V-950 awaiting Goldhofer. Near crane is RMS 600-ton, far is RMS 900-ton.



Maneuvering Goldhofer under V-950 for transload. Goldhofer has 28 independently-steerable axles for site maneuvering. (170 tons of counterweight plate on crane to right.)

Construction: Cooling Fans



Nearing the End of Construction



Nearing the End of Construction











Integrated Collaboration Center (ICC)





THANK YOU

