



EDDY COUNTY

”A COUNTY ON THE
RISE”



The Energy Consulting Group

Permian Basin: Massive El Capitan Carbonate Fore-Reef Facies



The Energy Consulting Group

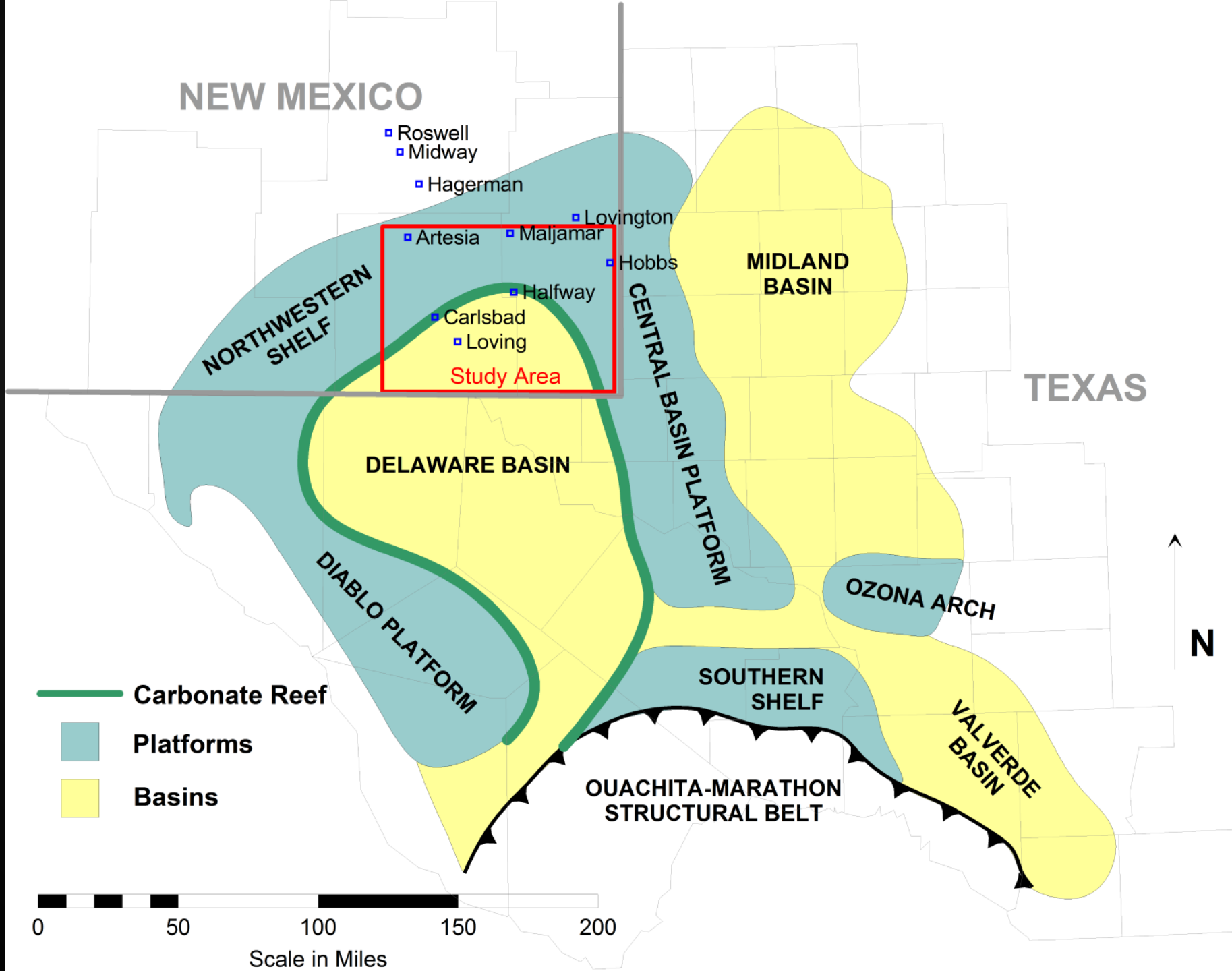
Copyright©2015
All Rights Reserved

Source: USGS

Not to scale.

All representations are approximate and are subject to change without notification.
Information is provided 'as is' without warranty of any kind, either expressed or implied



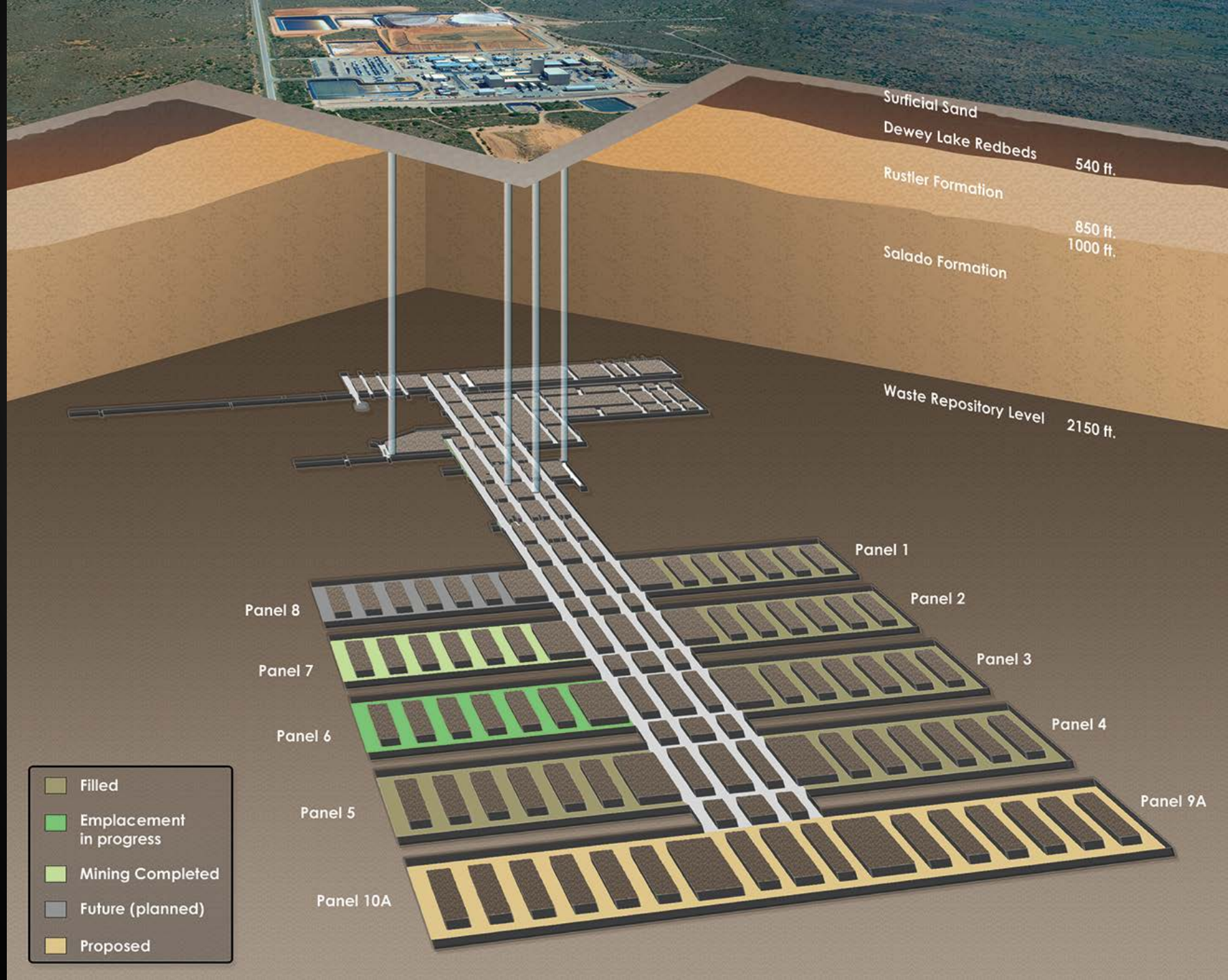


WHO WE ARE

- Population: 70-75,000
- Size: 4200 square miles
- Industry: Potash mines, WIPP nuclear waste depository/salt mine, Oil and Gas industries, Agriculture and Tourism
- One of the top revenue producers for the State of New Mexico

























MAIN ISSUES

- Unprecedented influx of people almost overnight
- Work force camps and RV parks popping up
- Infrastructure needs and challenges – compounded
- Housing issues and needs
- County employee recruitment and retainment
- Public Safety issues and concerns
- Industry needs and location







PATTERSON-UTI
DRILLING COMPANY LLC
RIG 245
→

FlexRig
HELMERICH & PAYNE IDC
HP 480
→
DO NOT REMOVE

FlexRig
HELMERICH & PAYNE IDC
HP 423
→
THIS SIGN IS PLACED FOR EMERGENCY RESPONSE
DO NOT REMOVE

PATTERSON-UTI
DRILLING COMPANY LLC
RIG 282
→

PASS
WITH
CARE

TOFP, LLC
**ACCESS
ROAD**

RESOLUTIONS AND SUCCESSES

- Eddy County has strong relationships/partnerships with our industries.
- Incentives are available such as: IRB's, state service industry programs, reimbursements and partnerships.
- Public Safety training is available through the county for all industries.
- Industry; especially the Oil and Gas industry, is vital for our well-being.
- We embrace and support all things “industry” in Eddy County.
- Our industries value us for being a good neighbor and solid partner.

Permian Basin Counties Oil and Gas Production in 2017

OIL		2017	NATURAL GAS	
Permian Basin County	2017 Oil Production in BBLs	Rank	Permian Basin County	2017 Natural Gas Production in MCF
Midland Co., TX	102,647,241	1	Eddy Co., NM	361,295,545
Lea Co., NM	94,653,924	2	Reeves Co., TX	306,213,633
Eddy Co., NM	67,345,919	3	Lea Co., NM	299,639,756
Reeves Co., TX	62,515,015	4	Midland Co., TX	231,778,719
Martin Co., TX	54,488,287	5	Loving Co., TX	196,968,022
Upton Co., TX	52,404,851	6	Culberson Co., TX	177,224,204
Loving Co., TX	46,831,210	7	Reagan Co., TX	159,770,397
Reagan Co., TX	38,043,337	8	Upton Co., TX	155,266,930
Andrews Co., TX	37,304,798	9	Irion Co., TX	111,564,393
Howard Co., TX	29,286,762	10	Glasscock Co., TX	110,970,515
Glasscock Co., TX	28,558,657	11	Crockett Co., TX	104,603,391
Yoakum Co., TX	23,780,274	12	Martin Co., TX	99,057,835
Gaines Co., TX	23,627,520	13	Pecos Co., TX	97,320,809
Ward Co., TX	23,058,458	14	Ward Co., TX	66,165,423
Ector Co., TX	19,594,782	15	Andrews Co., TX	64,882,777
Pecos Co., TX	14,680,538	16	Howard Co., TX	50,353,285
Irion Co., TX	9,727,749	17	Crane Co., TX	43,603,317
Crockett Co., TX	8,686,771	18	Yoakum Co., TX	31,662,734
Winkler Co., TX	8,306,651	19	Terrell Co., TX	23,644,133
Crane Co., TX	7,112,207	20	Gaines Co., TX	22,545,965
Dawson Co., TX	3,416,086	21	Winkler Co., TX	22,434,113
Borden Co., TX	2,585,613	22	Ector Co., TX	19,594,782
Chaves Co., NM	1,018,743	23	Chaves Co., NM	14,019,211
Culberson Co., TX	932,065	24	Schleicher Co., TX	8,188,158
Tom Green Co., TX	409,546	25	Borden Co., TX	2,830,140
Schleicher Co., TX	359,406	26	Tom Green Co., TX	2,294,287
Roosevelt Co., NM	251,650	27	Roosevelt Co., NM	1,724,280
Terrell Co., TX	42,057	28	Dawson Co., TX	1,666,176

Notes:

Eddy County overtook San Juan as Natural Gas "King of New Mexico" this year for first time in history.

Midland County moved into first place in Permian oil production for first time in decades.

Midland , Reeves, Eddy, and Lea County all saw large increases in Oil and Gas Production from 2016 to 2017.



