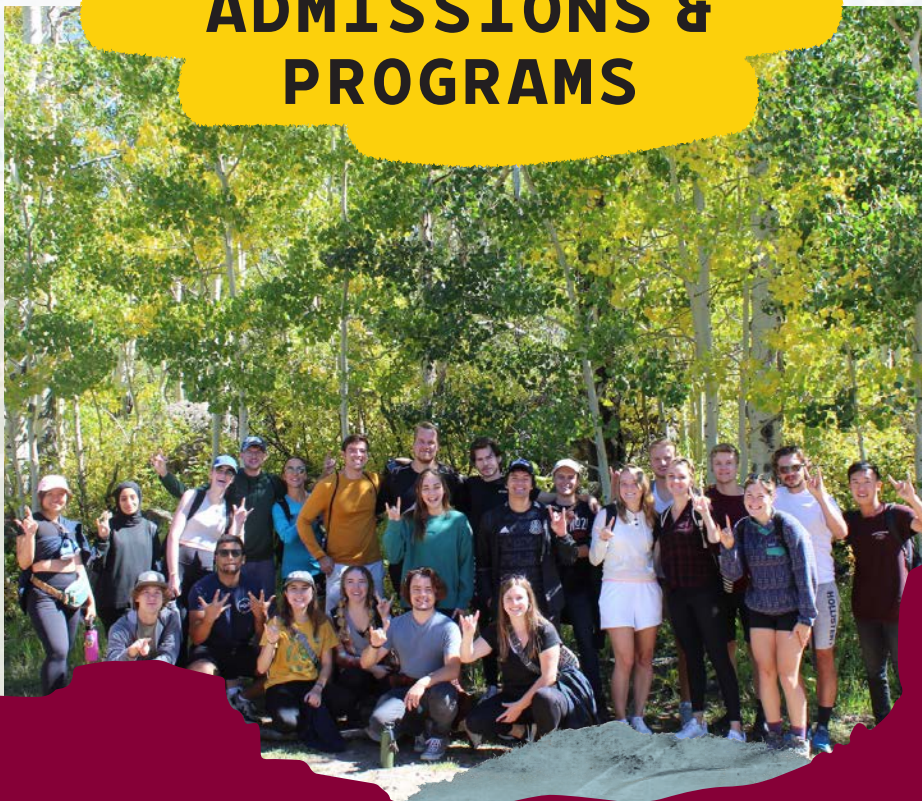


BEGIN YOUR INTERNATIONAL EXPERIENCE
AT COLORADO MESA UNIVERSITY

INTERNATIONAL ADMISSIONS & PROGRAMS



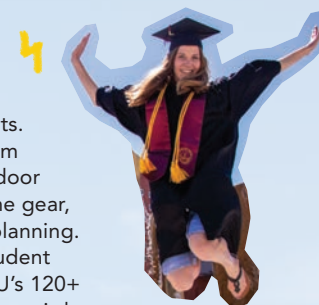
ARE YOU READY TO BEGIN?

Colorado Mesa University (CMU) is committed to making your international experience in the United States exceptional and affordable. With students from 42 countries and a student body that welcomes diversity, international students feel well-supported from the time they apply through graduation and beyond.

The International Admissions and Programs Office assists with admission and visa process, and offers new students an orientation and a peer mentor to facilitate adjustment. Throughout the year, the international office provides regular event programming and support services.

Choices for campus involvement are plentiful. The Programming Activities

Council offers free university-wide events. The Outdoor Program plans numerous outdoor trips and provides the gear, transportation and planning. The International Student Alliance, one of CMU's 120+ clubs and organizations, is here to help you network and develop friendships and a sense of belonging.



Learn more about CMU at coloradomesa.edu/future.

1925
FOUNDED

10K
STUDENTS

42
COUNTRIES
REPRESENTED

99+
INTERNATIONAL
STUDENTS
ENROLLED

300+
DAYS OF
SUNSHINE
A YEAR

89%
OF CLASSES
HAVE FEWER
THAN 40
STUDENTS



COLORADO MESA UNIVERSITY
FIVE MINUTES TO DOWNTOWN

PROGRAMS OF STUDY

EDUCATION MEETS HANDS-ON EXPERIENCE

119 majors at the certificate, associate, baccalaureate, master's and doctoral levels with 75 areas of concentration or emphasis and 52 minors.

BUSINESS

Accounting*

General Accounting
Public Accounting

Business Administration

Business Administration
Business Analytics
Business Economics
Energy Management/Landman
Entrepreneurship
Finance*
Hospitality Management
Human Resource Management
Human Resource Management ♦
International Business
Management
Marketing

Business ■

Computer Information Systems

Decision Support Systems ♦

Economics ■

Fraud Examination ♦

Innovation ♦

Real Estate ♦

Supervision ♦

COMMUNICATIONS AND LANGUAGES

Classical Studies ■

Editing and Technical Communication ♦

English

Secondary Teacher Licensure

Mass Communication

Media Strategies and Applications

Mass Communication ■

Arts Media Communication ♦

Philosophy ■

Spanish

Hispanic Studies
Secondary Teacher Licensure

FINE AND PERFORMING ARTS

Animation, Film, Photography and Motion Design

Animation ■
Film Studies and Digital Production ■

Art

K-12 Education Licensure
Studio Art

Art History

Dance

Graphic Design

Visual Design

Music

Commercial Music
Jazz Studies ■
K-12 Education Licensure
Liberal Arts

Music Performance

Instrumental
Keyboard
Vocal

Music with Elective Studies in Business

Theatre Arts

Acting/Directing
Communication Studies ■

Design/Technology

Music Theatre

Theatre (General)

HEALTH SCIENCES AND KINESIOLOGY

Athletic Coaching and Officiating ■

Exercise Science

Fitness and Health Promotion

Kinesiology

Adapted Physical Education
K-12 Education Licensure

Medical Laboratory Technician

Nurse Aide ♦

Nursing

Nursing
Nursing, LPN-BSN
Nursing, RN-BSN
Practical Nursing ♦

Outdoor Recreation

Industry Studies

Personal Training ♦

Radiologic Sciences

Computed Tomography

Sport Management

Surgical Technology

LIBERAL ARTS

Biology

Business Administration

Business Computer

Information Systems

Computer Science

Elementary Education Licensure

English
Mathematics

Social Science

Geology

General Studies

Humanities

Interdisciplinary Studies

Mathematics

Physics

Social Science

Sport Management

University Studies

SCIENCES, TECHNOLOGY, ENGINEERING, MATHEMATICS

Biological Sciences

Biology
Cellular, Molecular and Developmental Biology
Ecology, Evolution and Organismal Biology
Forensic Science ■
Secondary Teacher Licensure

Chemistry

Biochemistry

Civil Engineering**

Computer Science

Web Application Development ♦

Data Science ♦

Construction Management*

Cyber Security

Electrical/Computer Engineering**

Environmental Science and Technology

Geographic Information Science and Technology

Geosciences

Environmental Geology
Geology
Secondary Teacher Licensure
Watershed Science ■

Mathematics

Actuarial Science
Applied Mathematics
Mathematics
Secondary Teacher Licensure
Statistics

Mechanical Engineering**

Mechanical Engineering Technology

Physics

Sustainability Practices ♦

SOCIAL AND BEHAVIORAL SCIENCES

Addiction Studies ♦

Applied Anthropology and Geography

Archaeology ■

Criminal Justice

Forensic Investigation ■
Peace Officer Standards and Training

Emergency Management and Disaster Planning ♦

Forensic Anthropology ■

Forensic Investigation ■

Forensic Science ■

History

Public History ■
Secondary Teacher Licensure

International Studies ■

Political Science

Psychology

Counseling Psychology
Forensic Investigation ■

Social Science

Social Work

Sociology

Women's and Gender Studies ■

TEACHER EDUCATION

Early Childhood Special Education

Teacher Licensure

Elementary Education

Liberal Arts

K-12 Education Licensure

Art
Kinesiology
Music

Secondary Education

Biological Sciences
English
Geosciences
History
Mathematics
Spanish

■ Minor only

♦ Certificate only

* 3+2 Program available (earn a bachelor's and master's of business administration degree in five years)

** CMU/CU-Boulder Partnership-Degree conferred by the University of Colorado Boulder

ESTIMATED ANNUAL COST OF ATTENDANCE FOR INTERNATIONAL UNDERGRADUATE STUDENTS

Undergraduate Tuition and Fees (30 credit hours over two semesters)	\$ 24,663
Residence Hall and Meal Plan Average	\$ 11,571
Estimated Annual Total (not including scholarships, if eligible)	\$ 36,234

The chart above reflects the average cost of attendance for a full-time, international undergraduate for one year. These are estimated expenses. Living and personal expenses are **not** included and will vary for each student. For graduate costs, please visit coloradomesa.edu/international.

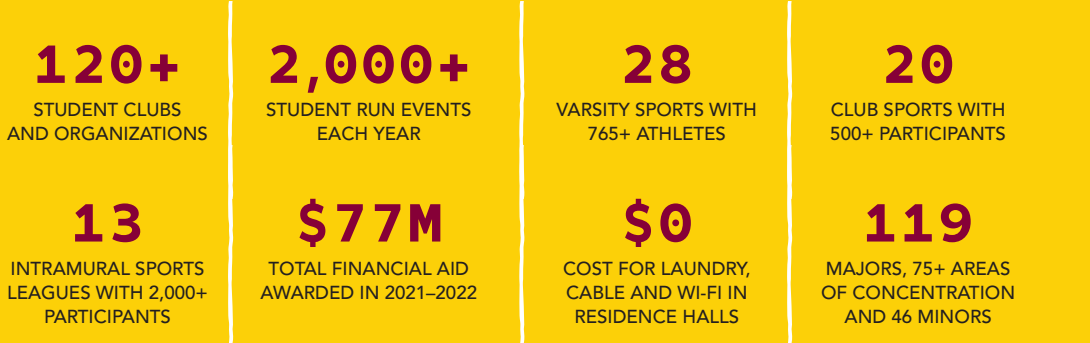
SCHOLARSHIPS

CMU offers a merit scholarship to high-achieving international students with a 3.0 U.S.-equivalent grade point average (GPA). The scholarship is valued at \$4,500 per semester (\$9,000 per year) and is renewable for up to four years.

INTERNATIONAL UNDERGRADUATE STUDENT APPLICATION CHECKLIST

Online application	<input type="radio"/>
\$40 application fee waived (Contact us to get a waiver code.)	<input type="radio"/>
Academic transcripts	<input type="radio"/>
Proof of English proficiency with a TOEFL of 70 or higher or IELTS of 6.0 or higher. Students who do not meet these minimum requirements can apply for conditional admission to CMU and attend an approved intensive English provider.	<input type="radio"/>
Financial support documents: bank statement(s) and the CMU Statement of Financial Support	<input type="radio"/>
Copy of valid passport	<input type="radio"/>

For admission details, requirements and documents for **international transfer students** or **graduate students** visit coloradomesa.edu/international. For undergraduate admission, please apply by May 1 for the fall semester (August–December) and by October 1 for the spring semester (January–May).



STUDENT LIFE

CMU's Student Life office aims to enrich the college experience by providing student-oriented opportunities that promote diverse learning, exploration and campus involvement. The only question is what do you want to do first? Visit coloradomesa.edu/student-life for details.

CLUBS AND ORGANIZATIONS

CMU supports more than 120 clubs and organizations spanning all interests including academic, athletic, cultural, professional associations and honor societies. Check out coloradomesa.edu/student-life/organizations for more information on the International Student Alliance (ISA) and to find a complete list of clubs and organizations that you can join.

LEADERSHIP OPPORTUNITIES

Organizations such as Associated Student Government and the Residence Hall Association enable you to take an active role in shaping our campus while improving your interpersonal skills and increasing your value to future employers.

ATHLETICS AND INTRAMURALS

Admission to all CMU NCAA athletic events is free for students with their student ID. In addition to the 28 varsity teams, CMU has 20 club programs and 13 intramural leagues that any student is welcome to join. For more information on NCAA sports, club teams and intramural leagues see CMUmavericks.com and coloradomesa.edu/student-life/intramurals.

NCAA DII Athletics

Men's Sports: baseball, basketball, cheerleading, cross country, football, golf, indoor and outdoor track and field, lacrosse, soccer, swimming and diving, tennis, triathlon, wrestling

Women's Sports: basketball, beach volleyball, cheerleading, cross country, golf, indoor and outdoor track and field, lacrosse, soccer, softball, swimming and diving, tennis, triathlon, wrestling

OUTDOOR PROGRAM

The CMU Outdoor Program is dedicated to outdoor adventure and education. It offers trip coordination, instruction and equipment rentals. Enjoy whitewater rafting, mountain biking, hiking, camping, cross country skiing, rock climbing and much more. You can also rent a bike for a \$250 deposit for one year. For more information visit coloradomesa.edu/outdoor-program.

RESIDENCE LIFE

By living on campus you get the complete college experience. You are just minutes from all of the action including sporting events, theatrical productions and cultural activities. Satellite TV, high-speed wireless Internet and free laundry are included in our 13 residence halls. Various residence styles and room types are available to meet your needs. Explore your options at coloradomesa.edu/residence-life.



TERESA SCHUSCHNIG

Germany
“...this has been one of the best years of my life. I have fallen in love with CMU, the campus and the outdoors. There is so much to experience that every day feels like a new adventure.”



BISHAL KHADKA

Nepal
“CMU has been a great university for me. I have gotten the chance to meet talented professors and cool friends. If you are applying to CMU, you are applying to the right university.”



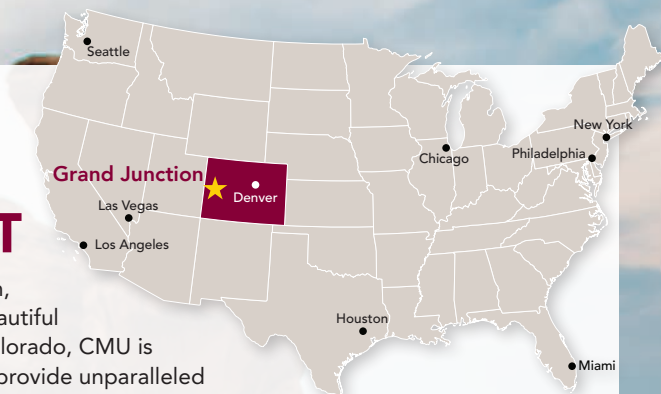
GABBY RODRIGUEZ

Colombia
“CMU has countless clubs and organizations that have welcomed me and made a foreign place feel like home.”

EXPLORE THE WEST

Located in Grand Junction, a small, safe city in the beautiful high-desert of western Colorado, CMU is surrounded by areas that provide unparalleled opportunities for year-round outdoor recreation.

Some local attractions include skiing and snowboarding, the Colorado National Monument (pictured), golf, tennis, parks, disc golf, hiking, biking, canyoneering, downtown festivals, arts, music, theatre, rafting, kayaking and camping. To learn more go to visitgrandjunction.com.



INTERNATIONAL ADMISSIONS AND PROGRAMS

Colorado Mesa University
International Student Admissions and Programs
1100 North Avenue
Grand Junction, Colorado 81501, USA
970.248.1802


Annie Gingerich
Director of International Student Admissions and Programs
970.248.1802
agingeri@coloradomesa.edu


Alec Knight
Coordinator of International Student Admissions and Programs
970.248.1759
ajknight@coloradomesa.edu

International Admissions and Programs is your primary resource for questions related to immigration documents and immigration advising. The office also offers orientation programs and other services to help you make the most of your U.S. university experience.



 coloradomesa.edu/international

 internationaladmissions@coloradomesa.edu

 [ColoradoMesaUniversity InternationalEducation](https://www.facebook.com/ColoradoMesaUniversityInternationalEducation)



COLORADO NATIONAL MONUMENT
20 MINUTES FROM CAMPUS